

## CHURCH FETE

Wed 8th August  
Memorial Hall  
12 midday to 5 pm

## BIGBURY BURGH BASH

Mon 24th Sept  
midday - 3.30 pm  
Tickets: £25 per person  
for

Residents and Second home  
owners Bigbury  
(from Holywell Stores &  
The Beach Shop)  
from 7th August

## BB BASH RAFFLE

Open to all  
Luxury prizes  
including stays at  
Burgh Island Hotel  
tickets available  
**HOLYWELL STORES &  
BEACH SHOP**

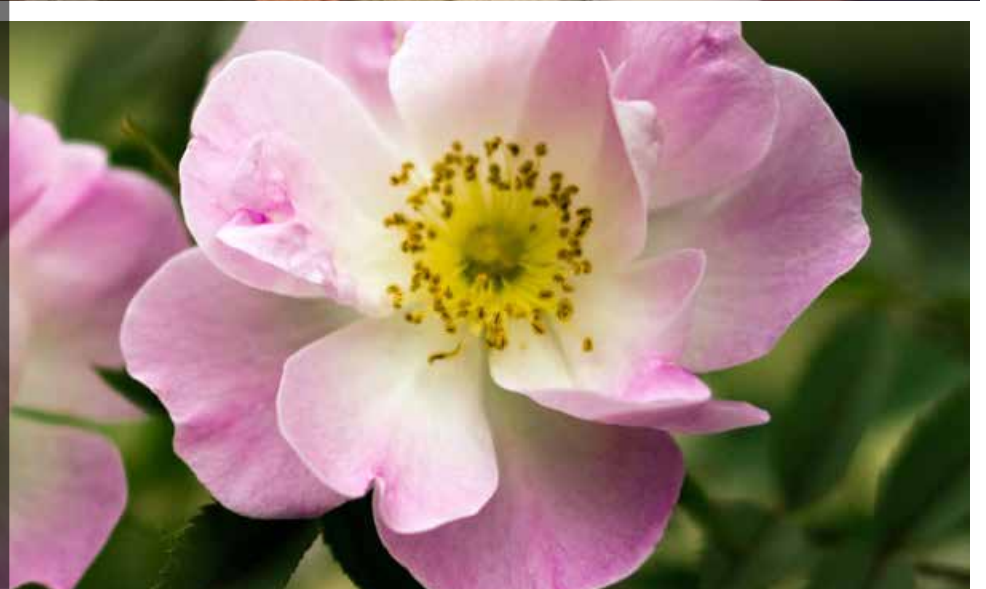
from 13th August

## MISSING DOG FIND MEG

## SEAMOOR LOTTO LAUNCHED

Buy- tickets and raise funds

**£12,533 RAISED  
for CHARITIES**

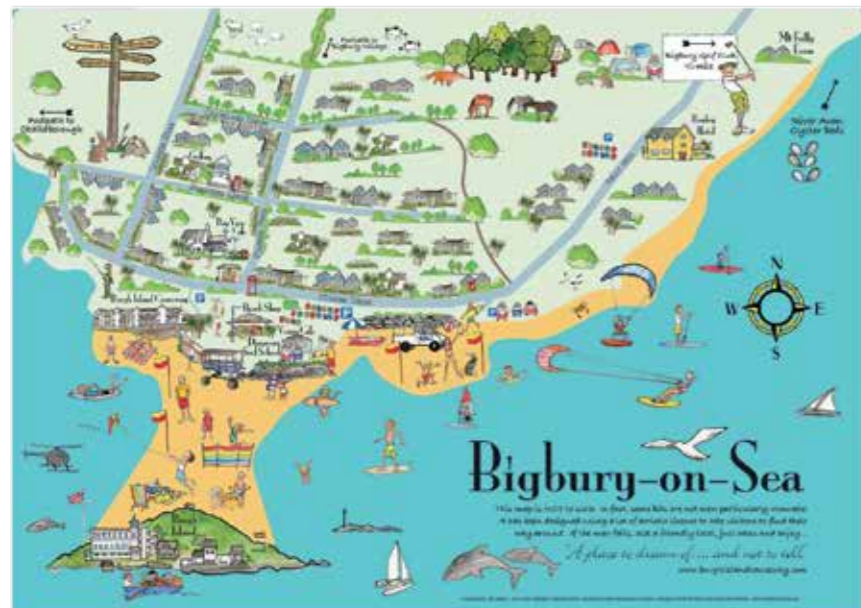




## BIGBURY ON SEA HOLIDAYS

[Bigburyonsea.co.uk](http://Bigburyonsea.co.uk)

The site for great holidays in a great community;  
now gives the accommodation, holiday activities,  
many useful links and maps.



Now features community events and dates.

Send any ideas for the site to

[John@BigburyOnSeaHolidays.com](mailto:John@BigburyOnSeaHolidays.com)

## BIGBURY ALBUM



Messing about on the River Avon



Granny sets up camp on Bigbury Beach



Support local  
good causes

Win up to  
**£25,000!**



## LETTER FROM THE EDITOR

Dear Readers,

August has sailed in over the horizon to join the migration of holiday makers that appear and disappear with the tides each day. This is the first 'August' edition of Bigbury News for some years and it seems to be a very busy issue.

August brings family and friends to Bigbury, whilst some off us head off to holiday homes and holidays elsewhere.

Bigbury News has continued to evolve and I am most grateful for the inputs of **Our Correspondents** whose contributions are much valued. Welcome to **Stuart Watts**, as our new sub-Editor for the **Bigbury Bio Blog** which will reveal the delights and concerns over the conservation of our flora and fauna – on land, at sea and in the river.

I am still searching for a **sub-Editor for the Culture Club** (featuring local artists, photographers, authors, history, book club etc.) and someone to be the **sub-Editor for 'Events'** (editing timely reports from Organisers, obtaining photos, liaising with neighbouring parishes over events listings etc.) Is that you?

It also takes me a day and a half to, single-handedly, fold all 450 Bigbury News, count, pack and label the piles of magazines for our distribution team, as well as get them to various sub-distribution point.

We are eternally grateful to **Dane Vanestone** for his considerable help in getting the Bigbury News out to Readers and very much hope the new Holywell Stores owners, in the future, will feel able to assist in the same way.

### FREE COPIES

Bigbury News - to 450 homes in Bigbury  
thanks to volunteer DISTRIBUTION TEAM

### DONATIONS

welcome all year round  
cheques 'Bigbury News'  
BACS :Lloyds Bank Sort Code 30-99-12  
Acc No: 29305568 Acc Name Bigbury News

### SUBSCRIPTIONS

2nd class post to UK mainland  
£30 per year (12 issues - colour version)  
[bigburynewseditor@gmail.com](mailto:bigburynewseditor@gmail.com)  
01548 810991

### HOLYWELL STORES

black & white version available

### FREE DOWNLOAD

[bigburycommunity.co.uk](http://bigburycommunity.co.uk) &  
[bigburyonsea.co.uk](http://bigburyonsea.co.uk)

Please get in touch with me to find how you could be involved more with Bigbury News. Its future is more sustainable if there are more people involved.

With conservation in mind - I have moved to recycled paper to print Bigbury News.

Please keep our **Postbag** full – we are all keen to hear about your reminiscences of old times and your insights into the delights of this Area of Outstanding Natural Beauty which we are privileged to call Home.

Please send in your photos for the **Bigbury Album**.

**Louise Wainwright**

**BIG BIGBURY THANK YOU** to all those who have made a donation to Bigbury Nes this month. I have not had time to update the Total Donations amount for the August issue.

### SEAMOOR LOTTO

Please take a look at the website run by SHDC for local causes - Bigbury News + local Charities and Aune Conservation Association

[www.seamoorlotto.co.uk/support/](http://www.seamoorlotto.co.uk/support/)

If Bigbury News obtains funding it will buy video and audio recording equipment to begin collecting personal reminiscences of local people. The audio recorder will automatically 'type' the words into a laptop when plugged in. Magic. Bigbury News will work with the Community website to make this information public.

See page 28 to find out what Aune Conservation Association will do with their funding.

**Contributors:** *Alice Taylor, Marlene Johnson, Michael Tagent, Sally Watts, Charles Harrington, Hazel Osborne, Rose Owen, Jean Wright, Yvonne Klidjian, Lucinda and Aidan Ellis, Lynn Hiscock, Richard Mathews, Sturat Watts, Valerie Scott, Rusty (ODA Agent) and Monty the Pub Cat.*

#### Photo credits:

**Annika Connolly, Louise Wainwright, Alice Taylor, Burgh Island, Charlotte Wainwright.**

#### DISCLAIMER

*Bigbury News and Editor cannot be held responsible for any loss or inconvenience caused by any inaccurate information contained within this magazine. Please contact the relevant party directly to confirm the details of any information or event. Inclusion of a business advertisement does not imply a recommendation by Bigbury News or the Editor. Please take up references of previous clients or customers before enlisting the services or products advertised herein.*

## CONTENTS

Letter from Editor	3
Keeping Bigbury Busy	4-5
Take a Walk on the Wildside	6-7
Volunteers wanted	8
Neighbourhood Watch	8
Crews that keep us Cruising	8
Beach Banter	10-11
Just a Chuckle	12
Church Fete, Produce Show	14
The Garden of Bigbury	16
Farm Gate	16-17
Pub Cat Speaks	17
<b>PULL OUT CALENDAR</b>	18-19
<b>BIGBURY LIFE EVENTS</b>	20-21
Charity, Church News	22-23
History Society	
Culture Club, Bookworms	
Not Just Words, Art Beat	24-25
Bigbury Bio Blog	28
Neighbourhood Plan	30
BPC Minutes (June)	31,32
Nineteenth Hole	34



#### Total Donations 2018

£1,970 from 55 individuals + 3 companies

#### Total Postal Subscriptions 2018

10 postal subscriptions

#### Total Bigbury News FREE distribution 2018

3,500 copies.

## BIGBURY CHURCH SUMMER FETE!

WEDNESDAY 8TH AUGUST  
12 - 5pm

MEMORIAL HALL  
ST.ANN'S CHAPEL

ADMISSION £1  
Children Free

Stalls, Games, Raffle, Tombola,  
Light Lunches, Cream Teas.



SERVING DEVON'S FINEST, LOCAL,  
SUSTAINABLY-CAUGHT SEAFOOD,  
IN SUMPTUOUS STYLE, FOR ALMOST 30 YEARS

Soak up every ounce of this glorious weather by  
dining at our Al Fresco eating area

The BBQ is hot, the fish and shellfish are fresh  
and the Oysters have been shucked

Come down for some cracking seafood

We are open every day this summer  
12.00 to 3.30 pm & 5.00 to 9.00 pm

Book online at [www.oystershack.co.uk](http://www.oystershack.co.uk)  
Or telephone 01548 810876

See our website for our events, offers & opening hours

You can find us near the estuary at  
Milburn Orchard Farm, Stakes Hill, Bigbury, TQ7 4BE



Editor Louise Wainwright [bigburynewseditor@gmail.com](mailto:bigburynewseditor@gmail.com) 07908 525663 (01548) 810991 Long Easton, Easton, Bigbury TQ7 4AN

Treasurer: Lucinda Ellis **Bigbury Communications Team:** Stuart Watts, Rose Owen, Valerie Scott, Jill Morris and John Davies.

**Distribution Team:** Simone Stevens, Jim Bennett, Iris McSherry, Peter & Gill Cook, Trish Bagley, Mía Gubbins, Suzy Owelett, Danny Grace, Burgh Island Causeway, NISA shop, Park Dean, Noel Thornton, Sally Watts, Margaret Singleton, John Simes, Elise Wilson, Jenny Very, Jane Tucker, Ann Lambie, Burgh Island, Pickwick, Hexdown, Oyster Shack, Venus Cafe, Holywell Stores, Dane & Hilary Vanstone.

Thanks to the Vanstones for delivering the bundles of Bigbury News to the Distribution Team and allowing Holywell Stores to be a pick up point.





### We are the South Hams leading installers of

- HEAT PUMPS
- SOLAR PANELS
- BIOMASS BOILERS
- LED LIGHTING
- CAR CHARGING POINTS
- UNDERFLOOR HEATING

### We can help to reduce your energy bills

New builds, renovations or simply upgrading we do them all so give us a call : **01548 831890**

Providing renewable energy solutions that don't cost the earth

Come and see our working heat pump and solar panels in the office

Unit 10c New Mills Ind Est Modbury PL21 0TP

Contact us: info@econrguk.com



### DISCOVERY SURF

Why do some people follow the surf around the coasts of the world? Having never surfed, but having a useful imagination, I guess there must be an incredible sense of freedom and exhilaration when the surfer becomes one with the rising wave and speeds with it like a sea bird skimming the space between the water and the on-shore wind. Is that why Annika and Martin Connolly called their company – Discovery Surf? Is it time for more of us to discover another hidden dimension to our lives by learning to surf?

I met up with Annika a few weeks ago and she shared with Bigbury News, the amazing adventures that she and Martin have had in the Antipodes and Hawaii before settling and bringing up their family at Bigbury on Sea. It was on one of these trips that Martin sat contemplating on a beach, just north of Sydney in Australia. He was working as a life guard on the same beach as the Home and Away series was filmed. Both Annika and Martin are second generation surfers, having grown up in Plymouth with surfing Dads, who had fallen under the spell of the surf in the late sixties. Both are now grandfathers and still surfing. Martin decided that he wanted to start a surf school of his own and, on returning to England, he lifeguarded in North Cornwall, having also worked for work for another surf school before his travels. Before and after work, Martin would hire out the few surf boards and wet suits, and then jump in his trusty Volvo car and do lessons.

This business began to swell, and like the rising tide, has gradually grown into the thriving business that it is today. Discovery has been running since 2002, and they have a great base/location at the Venus Café, where **Harry Bennett** is the surf school manager. Annika

### KEEPING BIGBURY BUSY

and Martin now run the admin side of the business from their home in Bigbury on Sea with most of the bookings coming from their website: [www.discoverysurf.com](http://www.discoverysurf.com)

Annika tells me that Discovery Surf was the first place in the UK to introduce Stand Up Paddle Boarding. Annika and Martin first experienced SUPing 12 years ago, whilst on their honeymoon in Hawaii. They came back to England and improvised with extra-long surf boards to start with. They now have 20 SUPs and are able to offer both hire and lessons.

There is so much on offer that almost everyone has the opportunity to discover how to catch their own waves. Children above the age of six and even grannies can book individual starter lessons. I wonder if they have made a 'granny on board' car sticker because I somehow bought a surf lesson at Beth's Himalayan Raffle earlier this year. On offer are surf camps, hen/stag parties, corporate events, school groups, birthday parties – you name it they have it. Discovery Surf's many instructors, also specialise in helping children and young adults with special needs, to take to the waves. All the kit, boards and wet suits are available to hire from their outlets at Bigbury on Sea and Challaborough. If you are inspired by the sighting of **Beth Huntley** going to work at Burgh Island in her sea kayak (see Beach Banter), maybe you should also take to the sea? Why not call up and book some lessons before the summer is out: **07813 639 622**

According to Coast Magazine, Discovery Surf is 'one of the best surf schools in the UK'. It seems a happy coincidence that Martin and Anika 'discovered' Bigbury on Sea and made it their home. If you want to discover more – you know where to go....

**Louise Wainwright**



Above: Martin and Annika Connolly

### SUMMER UPDATE from Annika

It's been a magnificent start to the summer here in Bigbury, with unprecedented calm, sunny and warm conditions almost daily for the past month. We've been extremely busy here at Discovery with a steady increase in the number of holiday makers visiting and many day trippers from around South Devon making the most of kayaking, paddle-boarding and surfing.

We've welcomed hordes of school children from many of our regular schools and many new faces too. It's also been wonderful to show off Bigbury in all its glory to the language student visitors – one group were so excited by the fun surf in warm water they went in without wetsuits, almost like they were back on the continent!

The unique geography of Bigbury Bay has meant we've really been able to make the most of conditions on all tides – it can be pretty flat on the high tide, so perfect for paddle-boarding and kayaking, but as soon as the tide goes out, a fantastic wave starts to break and there's plenty of surfing to be enjoyed. Come and visit us at one of our 3 sites – Bigbury, Burgh Island causeway and Challaborough, and we'll get you on the water any which way!

**Annika Connolly**  
**Discovery Surf**  
[www.discoverysurf.com](http://www.discoverysurf.com)  
**07813 639622**



Pic below: Martin leading a surf school



Annika's dad - **Barry Trout** - in late 1960s at Bantham

### BUILDING YOUR DREAM HOME FROM THE GROUND UP...

Our plant moves heaven and plenty of earth too, getting the hard work done. Available to hire with or without our fully trained operators.

If you would like to find out more about our range of services, we'd love to hear from you.



Tel: 07836 782801 [www.mma.consulting](http://www.mma.consulting)

**COPY DATE for Sept issue is Aug 21st**  
**PLEASE COOPERATE to help the Editor**



## TAKE A WALK ON THE WILDSIDE

Our footpath wardens, **Norman Botton** and **Trish Bagley** have devised a slightly off-piste walk for us which takes us into Ringmore Parish. All these walks and maps will feature in a publication in the future which will also include information about the flora and fauna as well as the historical sites which you may pass on the walk. If you go on these walks you are most welcome to send us in your photos of the vistas and wildlife that you come across. Wildflowers in the hedgerows, adders on the walls.... Join in.

**ST ANN'S CHAPEL TO AYRMER5 COVE AND RINGMORE** and back to St Ann's. Walking time two and a half hours.

**START.** Pickwick Inn (01548810320. map ref. 663472) for an excellent breakfast, served up to 11 am, then out of pub, turn right down road to Ringmore and soon cross to left hand side of road to join the marked footpath and hug the right hand side of the field (photo 1)



**Photo 1:** At footpath cross roads (660470) follow signed path left towards Bigbury church, follow footpath over concrete bridge then up the hill for 50 yards, always keeping the pond on your right and then turn right through the gate on to next path. (photo 2 663467)



**Photo 2** You will soon walk downhill through a delightful wood but keep dogs on lead in case there are cows or sheep. (photo 3 - below)



At end of wood follow field boundary to the right heading for the lower left hand corner where you cross the stile and bridge and turn right on to farm track. Soon look for gate and stile on your right to head into the parish of Ringmore, no need to bring passports though. (photo 4, 659457)



**Photo 4** Head across the field to the top left hand corner to hug the fence at the top. At the end turn right through gate to join a small road up to Ringmore. At top of lane turn left on to road to Challaborough and keep on it until you join track to AYRMER Cove car park (photo 5, 651457)



**Photo 5** Take track and at carpark turn right to see the map on display and then footpath down to the cove. (photo 6, 650456)



**Photo 6** After 300 yards turn right. Follow the well defined path to the cove. (photo 7) below shows you the view from the path). Take time to enjoy the beach and cool off with a swim. The walk should be about 1.5 hours up to now.



The easiest way is to retrace your steps up the same track and follow signs and road on the left to the Journeys End (01548810205) but the adventurous amongst you might choose the longer route on other side of valley at the cove which goes around a national trust wood before entering the village. the award winning pub which serves excellent lunches and dinners is then a little behind you on your right. (photo 8, 651459)



**Photo 8** After a well earned stop turn left out of pub, go up the hill and pass the church - well worth a look inside - and a 100 yards past the side road there is a permissive path on your left. Take that and then join the footpath around the edge of the field and go through the gate on the path into the wood at the back of Houghton Manor (photo 9, 656469).



**Photo 9** At the end of that track keep left in the field along the path, then cross the road to join the path you started on by turning left to St Ann's Chapel (photo 10). The journey up from AYRMER Cove should take under an hour unless you stayed longer at the pub!



**Photo 10** You can then get your provisions for the evening at the brilliant local stores, Holywell Stores .(01548308). We hope you enjoy this walk beyond the boundary.

**Bigbury Footpath Wardens**  
**Norman Botton** 01548810385  
 normanbotton@hotmail.co.uk  
**Trish Bagley (also our Tree Warden)**  
 trishbagley@icloud.com 01548 810053

## SUPPORT THE PATH

It is the South West Coast Path Organisation's 40th birthday in 2018 and they are hosting a number of organised walks in October to raise £40,000 to support the future of our coast paths. Guides will accompany the walks and provide local information on various themed walks.

Check out their website for details and register to join the groups.

[www.southwestcoastpath.org.uk](http://www.southwestcoastpath.org.uk)

Local events include:  
 Stories of Salcombe, History & Legends Walk  
 Torbay Wildlife Watch,  
 Family Nature Walk  
 Flaming Torch-lit Trail – Devon,  
 Night Wall.

October Time Trial,  
 Trail Running Challenge with The Plymouth-Coastal Runners



Experts in waterside living  
 for over 150 years.



More than you're looking for.

Savills South Hams  
 01548 800462  
 sjchick@savills.com

[savills.co.uk](http://savills.co.uk)



## PEACE OF MIND PROPERTY MANAGEMENT...

We look after your property, so that you can relax, knowing it will be in very safe hands.

If you would like to find out more about our range of services, we'd love to hear from you.



**MIKE MARTIN**  
 ASSOCIATES  
 The standard for living

Tel: 07836 782801 [www.mma.consulting](http://www.mma.consulting)





## VOLUNTEERS WANTED



## SUB EDITOR for CULTURE CLUB in BIGBURY NEWS

New feature in Bigbury News to promote local authors, artists and photographers - needs a sub-editor to discover our creatives as well as explore and promote the cultural activities on offer locally. Estimate a minimum of 2 hours per week.

Contact: **Louise Wainwright**  
bigburynewseditor@gmail.com



## SHRIMPS LEADER

Organiser for Shrimps, toddler group needed from Sept 2018. For more information please contact:

**Becky Phelan**  
01548 811179 / 07789 111200  
Or find Shrimps toddler group on Facebook



## NATIONAL TRUST

National Trust need volunteers for the South West Outdoor Festival to help Rangers over the weekend of 5-7 October at East Soar near Salcombe. Volunteer tasks include setting up the site, assisting with car parking, keeping the site clean and providing information to festival goers.

If you volunteer for 2 four-hour shifts you qualify for a free weekend ticket to the festival which includes camping onsite, for more information about the volunteer role for SWOF please look here <https://bit.ly/2JsLSPH> for more information about the festival itself please look on the website: [www.national-trust.org.uk/SWOF](http://www.national-trust.org.uk/SWOF) and follow @NTSWOF on Facebook and Twitter for updates too.



## BIGBURY NEWS

A couple of people to help fold, count and bag the 450 magazines for distribution. Could you help once a month for about half a day please?

Contact: **Louise Wainwright**  
07908 525663  
bigburynewseditor@gmail.com



## CREWS that keep us CRUISING

There are a number of local residents who volunteer their time either as local councillors, event organisers and fund raisers. You will see their names regularly featuring in Bigbury News.

You too, are invited and welcome to initiate a new fund raiser event or offer your services to any of the Volunteers Wanted adverts. If you can't commit to something as significant as this - your attendance at Parish Council meetings and the events organised makes a difference. **Please join in.**

### BIGBURY BURGH BASH

Mainlanders and the Burgh Island Team are joining forces to raise funds for some of our most respected local crews - the Hope Cove Lifeboat, Devon Air Ambulance and the RNLI. All these crews are supported by charitable donations and volunteers. The local Coastguards, who will be featured in next month's Bigbury News, are funded by local government and equally respected. You can meet all these teams at the proposed Bigbury Burgh Bash.

Tickets are strictly limited, in the first instance, to residents and second home owners in Bigbury. Parishioners (now about 50 persons) who have already requested to be on a provisional list should contact The Editor and pay her for the tickets and collect them before the end of August. Any tickets not paid for by this deadline will be made available for sale at **Holywell Stores** and **The Beach Shop**.

The provisional list is now closed - please do not contact the Editor for tickets from now on - please go to the shops to buy the 'spare' tickets. A maximum of 120 tickets are available (50 already sold) at £25 per person. Only two tickets per household so that as many Bigbury householders as possible can attend. Please pay cash for the tickets.

If we do not have 120 tickets sold by the end of August - the tickets will be offered to residents and second home owners in Ringmore, Aveton Gifford, Kingston and Bantham.

**Venue:** Burgh Island Hotel (ticket holders only). 12.00 midday to 3.00 pm - Monday 24th Sept.

**Included:** welcome glass of wine, hog roast (courtesy of **John Tucker**), salads, home-made bread, choice of puddings and dessert wine and live music (courtesy of **Burgh Island Hotel**). Other drinks from a paying bar. Guided Tour of Hotel.

**Speakers:** **Duncan Gray** on development plans for Burgh Island, **Kate Doison** on RNLI, **Louise Newbery** on Devon Air Ambulance and **TBC** on The Hope Cove Lifeboat.



'Together' is the theme for the Bigbury Burgh Bash on 24th Sept on Burgh Island. It is not only a great way to raise money for respected local charities but also a unique and welcome milestone in the relationship between the islanders and the mainlanders. I hope as many as possible will buy tickets for this exciting event.

Thanks to **Duncan Gray** and **Vlad Krupa** and the **Burgh Island Team** for the welcome gesture and to those on the mainland for their inputs, including: **John Tucker, Dane and Hilary Vanstone, Hannah Getley** and **Stuart Watts**. We are also grateful to the many donations for the Grand Raffle from our loyal local businesses.

**Louise Wainwright**



### Indecent exposure

Sunday 8th July 2018, just after 5pm Police received a 999 call to attend the Tidal Road, Aveton Gifford to a male exposing himself to a lady and her young daughter.

The male is described as white, in his late teens / early twenties, chubby build with short blonde hair. He was wearing blue jeans, a dark coloured hooded top, and was riding a motor-bike. He had a black crash helmet.

If anybody else has been unfortunate enough to be a victim to this male, or if you can help with the investigation in any way, then please contact Kingsbridge Police via 101 quoting CR/061045/18.

### Missing Dog

Please check sheds and barns for missing Meg. She is a 17-month old Jack Russell who went missing on Friday 13th July from her home in Bigbury. Last seen in St Ann's Chapel area and, at that time, wearing a red collar. She is microchipped and was on heat. Family are heartbroken and would dearly love her home. Any knowledge or sightings please contact me.

See also information in *Beach Banter*, about how to deal with issues of dogs in cars suffering from heat stroke.

Stay safe.  
**Steve Comley**  
Ringmore and Bigbury  
Neighbourhood Watch Coordinator  
07871 310987

**West Country Stoves**  
Contemporary & Traditional  
Wood, Multi Fuel, Pellet & Gas Stoves



- Advice
- Free Site Visits
- Installation
- Annual Servicing
- Chimney Sweeping

☎: 01548 550400  
[www.westcountrystoves.co.uk](http://www.westcountrystoves.co.uk)



**GEORGE H.W. ROSEVEAR & COMPANY**  
A DIVISION OF HOLBROOK ASSOCIATES

**ACCOUNTANCY, TAXATION AND COMPANY SECRETARIAL SERVICES**

**01548 831427**

**3 MODBURY COURT, 32 CHURCH ST., MODBURY, DEVON, PL21 0QR**  
[george@holbrookass.com](mailto:george@holbrookass.com)



Missing Meg - please help!



PRIME DESIGN

Commercial, Retail & Residential

## ARCHITECTURAL DESIGN & INTERIOR DESIGN

Plans & Elevations Drawn  
Planning Applications  
Building Regulations  
Free Advice

Contact: **Simon Bronstein**  
Tel: 01548 810005  
Mbl: 07710657387

2, Pickwick Cottages, St Anns Chapel, Kingsbridge. TQ7 4HQ

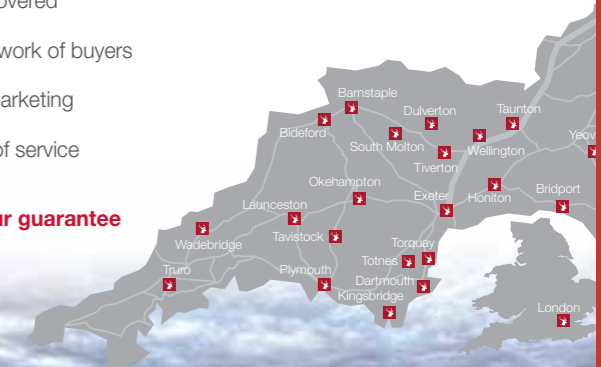


## The West Country is Stags Country

Experts in: Residential Property Sales, Residential Lettings, Waterside, Holiday Complexes, Property Auctions and Development Property.

- The West Country covered
- Links to national network of buyers
- Bespoke property marketing
- Guaranteed quality of service

**Our reputation is your guarantee**



1 The Promenade, Kingsbridge, TQ7 1JD | 01548 853131 | [kingsbridge@stags.co.uk](mailto:kingsbridge@stags.co.uk) | [stags.co.uk](http://stags.co.uk)



## BEACH BANTER



### HEAT STROKE

**Steve Comley**, our Neighbourhood Watch Coordinator answers the question: *'There is a dog in a vehicle that appears hot and distressed, what should I do?'* Hopefully his answer below will assist.

This does depend on the level of distress. If the dog is displaying any signs of heatstroke (see below advice by RSPCA) you should call the police on 999.

**Signs of heatstroke:** Is the dog panting heavily? Is the dog drooling excessively? Does the dog appear lethargic, drowsy or uncoordinated? Is the dog collapsed or vomiting? It is NOT advisable to force entry to the vehicle yourself in the first instance. If the police don't have time to get there, then you have to decide if you should take action. Make sure you tell the police what you intend to do, why and, where possible, take images/video of the dog and the names and numbers of witnesses to the incident.

The law states that you have a lawful excuse to commit damage if: 'at the time of the act or acts alleged to constitute the offence you believed that the person or persons whom you believe to be entitled to consent to the destruction of or damage to the property in question would so consent to it if s/he . . . had known of the destruction or damage and its circumstances' (section 5(2)(a) Criminal Damage Act 1971). (This legal reference is slightly modified for clarity) Don't do this unless certain of your ground and are prepared to defend your actions at court in the unlikely event any action was taken.

The RSPCA can offer guidance on information on cruelty via their cruelty line at any time on 0300 1234 999. See further advice from the RSPCA on the website at the link below in "People you may want to contact"

If the dog isn't displaying symptoms of heatstroke (advice from RSPCA):

- Call the RSPCA 24-hour cruelty line for advice on 0300 1234 999.
- Establish how long the dog has been in the car. A 'pay and display' ticket could help.
- Make a note of the car's registration. If the owner returns, but you still feel the situation was dangerous for the dog, you may still report the incident to the police.
- If you're at a shop, venue or event ask the staff to make an announcement to alert the owner of the situation.
- If possible, get someone to stay with the dog to monitor their condition. **If they begin to display signs of distress or heatstroke, be prepared to dial 999.**



### ODA REPORT

Patrolling the beach, we have a new ODA agent, called **Rusty**, who sends in his report:

"I am eternally vigilant in the pursuit of the ODA Mission: "No cat will cross our path". So far, I can claim some success on this broad expanse of sand. Only the other day I was patrolling here with a large number of associates, none of whom I actually know. It was clear however, that this area may safely be declared a Cat Free Zone and the ODA (only dogs allowed) mission has been fulfilled. It was distressing to learn that one of these furry feline four footed... (I will stop here since this is a family magazine) has not only inveigled its way into a public house but also seems to be gainfully employed by it!

If I seem embittered it is because I am the victim of Feline Assault. My own people, (those with whom I live) took me recently to visit their daughter, who owns a particularly vicious specimen. In an attempt to be friendly, I went out of my way to offer this female feline a convivial sniff, only to have (without warning, mark you) my nose brutally scratched! Protests on my part were responded to with: "Silly boy you shouldn't have sniffed her THERE", after which I was confined to a separate room. Yet dogs have no objection to this form of approach. In fact, as I know from personal experience, they actually like it!

Clearly there is a long way to go in our mission, but, **Dogs of Bigbury**, we must be united in our resolve. We shall fight them on the beaches... if Bigbury had more streets we would fight them there too. We shall never surrender! "

**Rusty**

P.S: That "Churchill" in the insurance advert- he is a dog after all!



Rusty



**Annika Connolly** takes some of the most beautiful photographs of our beach and coastline which can only entice us to join in the many activities on the water, hosted by Discovery Surf. See Annika's photo (left) of Stand-Up Paddle-boarders cruising around Burgh Island. Idyllic.

The South Devon AONB organisation have launched a photographic competition which invites us to enter photographs of the **Coast and Countryside. Competition closes on 30th Sept.**



The halcyon days have got **Beth Huntley** paddling up and down the coastline (right) The many river and beach cleans that have been organised this year seem to be working, as Beth reports she found very little plastic floating about on her sea journeys.



Challaborough Beach has a permanent beach clean kit at the head of the path leading down to the beach. Everyone's continued effort is needed to

**KEEP  
OUR  
BEACHES  
CLEAN**



### Rubbish - Sorted!

I have sent many shots of piles of rubbish in our carpark and beach to SHDC in an attempt to find a solution they will agree to, for this blight on the beauty of our coast. Finally, I have heard, that dedicated collectors have been appointed to keep us spic and span. If you see them please let them know that their work is appreciated. **Anthony** will be keeping our bins emptied at Sedgewell slipway and on the main carpark whilst his colleague is working on the Challaborough beach bins. You will see them around from 10- 2 when they return to Torr Quarry refuse centre with the collections then they are back again between 4-7. It will be great to have clean but busy car parks and slipways once again. **Beth Huntley.**

The Pilchard Inn team were delighted to welcome, 98-year-old, **Bernard Clark** for a pint, one sunny day in July. Burgh Island correspondent, **Claudia Testa**, thinks he may be the oldest person to visit the Pilchard – unless you know better. Please write in, if you know of anyone more 'mature'. I am sure Bernard is not old – just mature, like **Jo Dudmesh** reminds us. (see Culture Club feature)



Bernard Clark and family

Signs on the public footpath to the summit of Burgh Island advise that picnics are not allowed. But that's not a problem now. The old Pilchard Café reopened in July, after an 18-year gap. It is now possible to, work up an appetite with a walk to the Huer's Hut and satisfy the hunger pangs with a delicious burger, pizzas or fish and chips at the Pilchard Café. July has been a scorcher. The summery, pink and white striped, ice cream kiosk on the terrace near the café, has been doing great business. All in all, there is more to do on Burgh Island now, even if you are not a hotel guest!



If you have stories to share about the beach, estuary, riverside, sea, surf, fishing or fun - please send in your photos and words to:

The Editor Bigbury News  
bigburynewseditor@gmail.com

Beach Banter is Sponsored by Burgh Island, Venus Cafe and Discovery Surf - thank you. More page sponsors needed please. Any funds surplus to production costs of Bigbury News will be donated to local charities at the end of the year.



## LASTING POWER OF ATTORNEY

*are you prepared?*

Lasting Powers of Attorney enable you to nominate someone NOW who you trust to make important decisions on your behalf if and when you can not in the future.

For peace of mind, our qualified Social Workers help you record your choices about your Property, Finances, Health & Care as well as help you set up a Living Will for others to follow if you lose mental capacity.

We simplify the application, witness, signatory and registration processes at a fraction of the price most solicitors charge.

**Give us a call for a  
no obligation chat**

**07594 56 00 11**

[www.personalisedsocialcare.co.uk](http://www.personalisedsocialcare.co.uk)



## JUST A CHUCKLE

Jo Dudmesh had to chuckle when she read this. So, just for you – read on.

### I'm Not Old – Just Mature!

On Wednesday at B&Q – the assistant was a gent. From my purchases, he took off ten percent. I asked for the cause of the lesser amount; And he answered, "It's because of the Senior's Discount".

I took the grandchildren to McDonalds for burgers and fries,

And there, once again, I got quite a surprise. The clerk poured a coffee, which he handed to me. He said, "For you Seniors, the coffee is free". Understand, I'm not old, I'm merely mature But some things are changing, temporarily, I'm sure.

The newspaper print gets smaller each day. People speak more softly – often I can't hear what they say.

My teeth are my own (I have the receipt), And my glasses identify the people I meet. Oh, I've slowed down a bit, not a lot I am sure.

You see I am not old, I'm merely mature. The gold in my hair has been bleached by the sun. You should see all the damage the chlorine has done

Washing my hair has turned it all white, But don't call it grey, saying 'blonde' is just right. My car is all paid for, not a penny is owed, Yet a kid yells 'Old bag, get off the road!' My car has no scratches, not even a dent, My friends all get older much faster than me, They seem much more wrinkled, from what I can see.

I've got 'character lines', not wrinkles for sure, But don't call me old, just call me mature. The steps in the houses, they're building today Are so high that they take your breath away, And the streets are much steeper than ten years ago

That should explain why my walking is slow. But I'm keeping up with what's hip and...you want a bet?

I nowadays surf on the internet!

I'm still in the running, in this I'm secure.

**Because I know I'm not old, just mature**



## KINGSBRIDGE EYE CARE GROUP

1, The Promenade, Kingsbridge. Tel: 01548 856854

### Clinical Excellence

- Full Eye Health Examinations
- Contact Lens Specialists
- Retinal Photography & Macula
- Pigment Density Scan
- Glaucoma Examinations
- OCT Eye Scanning Examination

### Luxury Designer Brands

**Nigel Frost Optometrist**  
3, Chene Court  
Modbury  
01548 830944

**Salcombe Eye Care**  
84, Fore Street  
Salcombe  
01548 843207

[www.kingsbridgeeyecare.co.uk](http://www.kingsbridgeeyecare.co.uk)

## BIGBURY ON SEA PROPERTY SERVICES

Tel: 01548 811137

Email: [bigburypropertyservices@gmail.com](mailto:bigburypropertyservices@gmail.com)

Local Trustworthy couple offering a first class

Management / Maintenance Service.

### Services Offered:

Changeovers and laundry - Key Holding / Property checks

Deep Clean - Window Cleaning - Garden Services

### We also offer:

Complete property maintenance from decorating to a new bathroom.

## KINGSBRIDGE FUNERAL DIRECTORS

(Adrian Mundy & Joan Johns)

The only Independent Family Funeral Directors in Kingsbridge.

We provide a complete personal 24 hour service for Kingsbridge, Salcombe and the South Hams.

Approved Members of the N.F.F.D.

## ADRIAN MUNDY MONUMENTAL MASON

For All Your Complete Memorial Requirements

**KINGSBRIDGE 01548 856340**

Devon Square View, Lower Union Road,

Kingsbridge, TQ7 1EF

[www.kingsbridgefuneraldirectors.com](http://www.kingsbridgefuneraldirectors.com)

## T. S. BOOKKEEPING

Professional and private bookkeeping service

Income/expenditure recording

Bank account reconciliation, prepared to trial balance

Household and Business accounts undertaken

For a no obligation discussion please contact:

**Trudy on 07788 596527/01548 810185**

**or email: [tsbookkeeping@btinternet.com](mailto:tsbookkeeping@btinternet.com)**



## THE SALON

Hairdressing for men  
and women  
Manicure & Pedicure  
43 Fore Street  
Kingsbridge

Tel: 01548 852128



*Julie*  
Fully Qualified  
**Mobile Hair-stylist**

Ladies & Gents

Competitive Prices

Answer phone Service

**01548 810634**



## Hands-on Energy Healing

- Seichem
- Reiki
- Reconnective
- Bengsten Method

My house or at yours  
Contact: Beth  
01548 810385  
[huntthebum@icloud.com](mailto:huntthebum@icloud.com)

Grow. Learn. Gain confidence

Modbury Pre-school  
2-4 year olds  
9am-3.30pm  
Monday-Friday  
Term time

SCHOOL'S OUT MODBURY

Modbury School's Out  
3-11 year olds  
7.30-6 (Term time)  
8.00-5.30 (School Hols exc. Christmas)  
Monday-Friday

Provider of 'Extended Entitlement Hours' (term-time or stretch offer) for 3-4 year olds.  
Provider of '2 year old funding'

Fun, Safe Environment

## Carers Direct (SW) Ltd

Professional homecare  
in your local community

- Quality home care provided by trained, experienced, reliable, local carers.
- We can support you with personal care, shopping, companionship, meal preparation, outings and light housework.
- We have carers available for day or night homecare in the South Hams area.

Tel: 01548 854358

## COUNTRY HILL ANIMAL SHELTER

REGISTERED NO. 1114853 Tel: 01548 288001

[www.countryhillanimalshelter.co.uk](http://www.countryhillanimalshelter.co.uk)

## HOUSE CLEARANCE AND FURNITURE REMOVALS

We can help with:

- Collections of any furniture items which you would like to donate to our charity for resale
- Collections of any unwanted large items which cannot be resold and need to go to the skip
- Help with your removal of furniture if you are moving house

For any furniture removals please help us keep busy our Ford Transit Van, please call us on

01548 288001 today!

Bring your sewing requirements to

**Rose**

01548  
810815



**Custom Interiors  
and Covers**

**Boat Interiors  
Cockpit Cushions & Covers  
Antique Furniture  
Three Piece Suites  
Auto Upholstery**

Steve Newton

Unit 6, Erme Bridge  
Ivybridge, Devon PL21 9DU

01752 893139  
07749 454039  
info@custom-interiors-covers.co.uk

[www.custom-interiors-covers.co.uk](http://www.custom-interiors-covers.co.uk)



# BIGBURY

## GARDEN PRODUCE SHOW

with a **SUN, SEA & SAND** theme

**SUNDAY 2nd SEPTEMBER 2018**

**Bigbury Memorial Hall**

**CLASS A  
BEST FRUIT & VEGETABLES**

A beach inspired basket of flowers  
One individual rose  
A vase of garden flowers of your choice  
Three identical flowers

**CLASS C  
MISCELLANEOUS:**

Largest Marrow  
Longest Runner Bean  
Heaviest Onion  
Most unusual shaped fruit or vegetable  
Tallest Sunflower  
Limerick with a sun, sea & sand theme  
A sun, sea & sand picture  
A sun, sea & sand decorated egg  
A cup cake with a sun, sea & sand decoration



Entry forms on the day

## BIGBURY CHURCH SUMMER FETE!

**WEDNESDAY 8TH AUGUST  
12 - 5pm**

**MEMORIAL HALL  
ST. ANN'S CHAPEL**

**ADMISSION £1  
Children Free**

Stalls, Games, Raffle, Tombola,  
Light Lunches, Cream Teas.

BIGBURY'S ANNUAL PRODUCE SHOW – THERE'S SOMETHING FOR EVERYONE TO ENTER!

### BIGBURY PRODUCE SHOW

This year's theme is 'SUN, SEA and SAND'  
Sunday September 2<sup>nd</sup> 2018 at the Memorial Hall

#### Class A Fruit and Vegetables

	Number in display		Number in display
. Beetroots, tops trimmed to 7cms	3	10. Garlic corms	2
. Carrots, tops trimmed to 7cms	3	11. Corn on the Cob	3
. Courgettes (any colour)	3	12. Peppers (any colour)	2
. Runner beans	3	13. Tomatoes	5
. Leeks	3	14. Apples (dessert)	3
. Onions, white; trimmed and tied	3	15. Apples (cooking)	3
. Onions, red; trimmed and tied	3	16. Pears	3
. Cucumbers	2	17. Other vegetable of your choice	3
. Potatoes	5	18. Other fruit of your choice	3

#### Flowers (to be presented in a vase unless otherwise stated)

1. A beach inspired basket of flowers
2. One individual rose
3. Vase of garden flowers of your choice.
4. Three identical flowers

#### Miscellaneous

- . Largest marrow
- . Longest runner bean
- . Heaviest onion
- . Most unusual shaped fruit or vegetable
- . Tallest sunflower (sunflower itself or a photo showing plant and height)
- . A limerick with a sun, sea and/or sand theme
- . A sun, sea and sand picture
- . An egg decorated with the sun, sea and sand (children only)
- . Homemade cupcake with sun, sea and sand decoration.

All fresh produce must be grown in the Parish of Bigbury

J.B. Bring your exhibits to the Hall on 2nd September from 10.00– 11.00 a.m. Only one exhibit per person in each class. Cost will be 50p per exhibit up to a maximum of £2 per person for any number of exhibits.

The judges will do their work from 11.00 a.m. – 2.00 p.m.; viewing of exhibits and refreshments will be available from 2.30pm.

PRESENTATION OF PRIZES WILL BE AT 3pm

**JUDGE'S DECISION IS FINAL**

Any queries to Angie Bond (811131) or Sally Watts (810373)

## GET GROWING!

ST. LAWRENCE CHURCH, BIGBURY

# GRAND RAFFLE for £100 CASH

IN AID OF THE TOWER AND BELL FUND  
DRAW ON WEDNESDAY 8 AUGUST 2018  
AND MANY MORE GREAT PRIZES

IN BIGBURY MEMORIAL HALL, ST. ANN'S CHAPEL

TICKETS £1.00



## Multi Award Winning Swimming Pool Installers

[www.deependpools.co.uk](http://www.deependpools.co.uk)



Exeter, Devon  
8 Trusham Road,  
Marsh Barton, Exeter EX2 8QH  
email: [info@deependpools.co.uk](mailto:info@deependpools.co.uk)  
tel: 01392 247466

## PEBBLES

Est. Salcombe 2004



We take care of your home

For holiday homes, private second homes and estates in Bigbury on Sea:

- Property management
- Refurbishment

01548 843 680  
[pebblesofsalcombe.co.uk](http://pebblesofsalcombe.co.uk)



Rest Assured  
PROPERTY MANAGEMENT [www.restassuredproperties.co.uk](http://www.restassuredproperties.co.uk)

Do you have a holiday home in Bigbury?  
Rest Assured Properties are looking for more rental properties to satisfy the high demand. We promise a low commission rate so you can sit back and earn a great income.

Call Patsy on 01752 830409 or 07722294060  
or email [restassured@hotmail.co.uk](mailto:restassured@hotmail.co.uk)  
for more information



Flexible, Friendly & Affordable

## Computer Problems?

Call

# TGO

Web Services Ltd

**Locally Based, Quick Service,  
Reasonable Rates**

- We can help with:
- New/Replacement PC's and Peripherals • Laptops • PC repairs •
  - Broadband Installation • Hardware Upgrades • Web Design •
  - Virus Removal • Data recovery • Online Safety • Lessons •
  - Laptop repairs • Computer Tune-ups • Wireless Help •
  - PC Healthchecks • Network Troubleshooting •
  - Authorised AVG Internet Security Reseller •

**Affordable and effective  
computer repairs & support.  
Fast, reliable Service.  
Clear, helpful advice.**

Call Phil on 01548 810628 or  
E-mail: [phil@tgoweb.co.uk](mailto:phil@tgoweb.co.uk)

## QUALITY BUILT IN DESIGN AND BUILD...

Craftsmanship, expertise and unrivalled attention to detail. We are creating dream homes all around Devon.

If you would like to find out more about our range of services, we'd love to hear from you.



**MIKE MARTIN  
ASSOCIATES**  
The standard for living

Tel: 07836 782801 [www.mma.consulting](http://www.mma.consulting)



# Avon Mill

Garden Centre • Café • B&B  
Art & Crafts • Boutique • Florist



Woodland walks • Dogs welcome  
Independent shops • Plenty of parking  
Breakfasts, lunches & 'Devon Cream Teas'

Loddiswell • Kingsbridge • Devon • TQ7 4DD  
www.avonmill.com 01548 550338



## FARM GATE

I took a copy of July Bigbury News with me to the Masai Mara in Kenya in July and shared this with **Julius** and **Jean Marc**, our local Masai guides. (These are their 'English' names.) They were particularly entertained by the Farm Gate, featuring the high-tech farm of the Crimp Family at Tuffland Farm, and bemused by the grass measuring machine.

Both are also farmers and keep cattle and sheep of their own, which are cared for by their wives whilst they are busy taking visitors around their park. The Mara is owned by the local Masai communities and not part of the national scheme governed by the Kenya Wild Life Service. The importance of conservation is now engrained in the local communities

and poaching is well controlled due to the integration of local communities in the tourist business. Jean Marc and Julius work at Entim Camp [www.entim.com](http://www.entim.com)

The annual migration of wildebeest from Tanzania was very late this year because the rains in Tanzania had gone on much longer than usual, making it unnecessary for them to migrate to Kenya for grazing. Farmers, the world over, keep a close eye on the growth of grass. Julius and Jean Marc may even be a Bigbury News correspondent for this feature to tell us how their animals fared this year? I am sending them a copy of the August Bigbury News.

**Louise Wainwright**



## THE PUB CAT SPEAKS

Lazarus, the Spider

As I lay on the hearthrug here at the Artful Dodger with my companion Bruce, a very fine Persian Blue, one has time to ponder many things. Take my dear friend, Lazarus, for example. He is a Tegenaria Parietina spider or 'Cardinal' – the species earned this distinguished moniker by scaring the noble pants off Cardinal Wolsey, regularly appearing in his bath and dressing room at Hampton Court. In the added Archbishop's mind, they assumed the status of mystical creatures - Wolsey instructed his staff they were never to be harmed.

My dears, you have all seen Cardinal Spiders in your homes. As wide as your hand, they will be lurking beneath your bed, or curiously winding their way up to the plughole into your bath. The Cardinal has eight angular legs attached to a reddish brown body, adorned by two pedipalps - strange glove-like organs on their heads – used for mating. They also have a rather fetching mane of hair on their tibias.

But, dear friends, arachnoids are like human beings and do something useful. They do not deserve to be harmed! For example, they are "nature's safest insecticides" because they munch on midges, mosquitoes and pesky houseflies! If you see one motionless, it is because they are resting – they can run fast but they tire quickly.

Lazarus entertained us with a story about how he frightened Fagin - the landlord of the Artful Dodger - in his bathtub. Apparently, Lazarus had to run for his life as the old scroat spotted him, and repeatedly tied to squash him with his pink body puff, before deluging him with water, and finally squirting him with Wildebeest Aftershave.

But, dear reader, Lazarus is part of peaceful community of spiders who live in the attic at the Artful Dodger. They spin dramatic sheet webs of finest silk, and females hang their egg sacs from them with tiny strands of finest taffeta. The webs capture sunbeams and sent forth a kaleidoscope of rarest colours, and they bow and stretch in the soft breezes. Lazarus made a cats cradle especially for Bruce's birthday – it is too delicate to touch. Oh, how I wish I could work and weave and spin and create such art. But then, as a feline there are many other webs I can weave....

**Monty the Pub Cat**



## The GARDEN of BIGBURY

**BLACK BRYONY**  
(*Dioscorea communis*)

I have loved this plant for years. It starts as a lovely trailing knot of heart shaped leaves and develops into a trailing knot of brightly coloured berries. I used them for a Harvest decoration of the pulpit once and then discovered the berries are poisonous! This year, as with so many other plants, they are developing early and will be over by our normal Harvest time. According to one source this is a "womandrake", the female equivalent of mandrake, with evidence of hallucinogenic trips going back to the shrieking root dug from under the gallows. Who knows? Here are a photo of the early leaves and a little painting I did some while ago of the berries.



**BIGBURY**  
GARDEN PRODUCE SHOW  
with a SUN, SEA & SAND theme

SUNDAY 2nd SEPTEMBER 2018  
Bigbury Memorial Hall

<b>CLASS A</b> BEST FRUIT & VEGETABLES	<b>CLASS C</b> MISCELLANEOUS:
<b>CLASS B</b> FLOWERS:	Largest Marrow
A beach inspired basket of flowers	Longest Runner Bean
One individual rose	Heaviest Onion
A vase of garden flowers of your choice	Most unusual shaped fruit or vegetable
Three identical flowers	Tallest Sunflower
	Limerick with a sun, sea & sand theme
	A sun, sea & sand picture
	A sun, sea & sand decorated egg
	A cup cake with a sun, sea & sand decoration

Entry forms on the day

**Turtle Farm Produce**

**SUMMER OPENING**  
WEDS to SATURDAY  
10.00 am to 6 pm

Marmalade & chutneys  
Wild Bird Food  
Seasonal vegetables & potatoes  
Free range eggs  
Farmer Toms Ice Cream on sale

Plants - Many shrubs & Climbers  
Ready potted Spring Flowering Bulbs

**\* HOME PRODUCED LAMB and PORK \***  
Assorted flavoured sausages & burger, chops available  
**Challonscombe Dairy Products**

We are in the same place, polytunnel on top of the hill –  
Bowling Green Cross  
Two ways to get to us -  
The turning on the bend before the golf course -  
or on the Bigbury Village to Challaborough / B-o-S. road

Phone evenings - 01548 810923 - WE CAN ALSO DELIVER



Rest Assured Laundry  
 Tel: 01752 830409  
 07722 294 060  
 www.restassuredlaundry.co.uk

The Bigbury Beach Shop



EST. 1997

Coastal lifestyle & Gifts  
 Souvenirs, Beachwear & more  
 Everything you need for a  
 day out in Bigbury-on-Sea!

01548 810788 #PlasticClever

@bigburybeachshop  
 www.bigburybeachshop.co.uk

SUNDAY	MONDAY	TUESDAY	WEDNESDAY	THURSDAY	FRIDAY	SATURDAY
			L - 15.17 1	L - 15.47 2	L - 16.23 3	L - 17.07 4
			KORNILOFF COFFEE 10.30 - 12.00 COURTLANDS Cleveland Drive, BoS			
L - 18.07 5	L - 19.32 6	L - 8.18 7	L - 9.30 8	L - 10.47 9	L - 11.48 10	L - 12.43 11
St Lawrence Service 11.00 am Sunday Worship	BLACK bins  YOGA MH 7.00 - 8.15 pm	EXERCISE MH 11.00 - midday  YOUTH CLUB 17.30 - 19.30 MH  KINGSBRIDGE JAZZ 6.30 pm Fishermans Rest Aveton Gifford	BIGBURY BOOKWORMS CHURCH FETE 12.00 to 5.00pm Memorial Hall St Ann's Chapel  BIGBURY PARISH COUNCIL 7.30 - 9.00 pm MH			
L - 13.34 12	L - 14.20 13	L - 15.04 14	L - 15.44 15	L - 16.22 16	L - 17.00 17	L - 17.42 18
St Lawrence Service 11.00 am Sunday Worship	BROWN bins RE-CYCLING  YOGA MH 7.00 - 8.15 pm	EXERCISE MH 11.00 - midday				
L - 18.33 19	L - 19.40 20	L - 08.19 21	L - 09.45 22	L - 10.49 23	L - 11.37 24	L - 12.18 25
St Lawrence Service 11.00 am Holy Communion	BLACK bins  YOGA MH 7.00 - 8.15 pm	EXERCISE MH 11.00 - midday				
L - 12.55 26	L - 13.29 27	L - 13.59 28	L - 14.28 29	L - 114.57 30	L - 15.26 31	
St Lawrence Service 11.00 am Holy Communion	BROWN bins RE-CYCLING  YOGA MH 7.00 - 8.15 pm	EXERCISE MH 11.00 - midday				AUG 2018

PRIZE

Two free tickets, kindly donated by Salcombe Players, to anyone who still has the June Bigbury News and can identify the wildflowers in the Garden Gate Feature.

Send your answers to bigbury-newseditor@gmail.com or text a message to 07908 525663 - giving your answers and your name and telephone number.

GOOD LUCK

Key:  
 MH =  
 Memorial Hall  
 St Anns Chapel

LOW TIDE  
 Bigbury-on-Sea

MATTHEW BISSEX ARCHITECTURAL DRAWINGS  
 PLANNING AND BUILDING REGULATIONS APPLICATION

PLANS DRAWN FOR ALL EXTENSIONS  
 LOFT CONVERSIONS, CONSERVATORIES,  
 NEW BUILD HOUSING.

Visit my website at [www.mbad.co.uk](http://www.mbad.co.uk)  
 For a free quote on plans for your build project contact  
 Matthew on 01761 436861 or mobile 07843 286857

L&J  
 GARDEN AND PROPERTY MAINTENANCE

For your all-year-round gardening needs. Local and reliable. We'll tackle and maintain your lawn, flower beds, wooding and fockeries, at a very competitive rate. CALL US TODAY!

07580790097 | 07976936332 | 01548 811136

CHURCH CLEANING ROTA

5th Aug: Gill Middleton  
 12th Aug: Cathy Harrington  
 19th Aug: Pat Holness  
 26th Aug: Louise Wainwright

COMING UP

LATER...

Sunday 2nd September  
 Garden Produce Show.  
 This year's theme is 'Sun, Sea and Sand'.  
  
 Friday 26th October  
 Paddleboat Theatre's 'Rustle'  
 Half term entertainment for children and families.  
 More details next month.

Friday 2nd November - 7 pm -  
 Musical Evening in the Church  
 Friends of St Lawrence

KINGSTON  
 EVENTS

4th Aug  
 Fun Day

26th Aug  
 Teddy Bears Picnic  
 Churchyard

BIGBURY NEWS  
 accepts no responsibility  
 for errors in the calendar.

Check tides before  
 journeys.  
 Check with organisers about  
 tickets & times.

AUGUST HOLIDAYS for  
 several regular events. See  
 updates page 21.

Unwind  
 Beauty - Massage - Skin Care

Bigbury Village  
 Kingsbridge  
 South Devon  
 Tq7 4ap

Louise Pitt  
 07786860440  
 unwindinbigbury@gmail.com  
 www.unwindinbigbury.co.uk

Unwind Hair Salon  
 Ladies & Gents Stylist  
 Krista Pickering  
 01548 810000  
 07808645981

Bigbury Village  
 TQ7 4AP  
 unwindhairbigbury@gmail.com  
 www.unwindinbigbury.co.uk

BIGBURY  
 GARDEN PRODUCE SHOW  
 with a SUN, SEA & SAND theme

SUNDAY 2nd SEPTEMBER 2018  
 Bigbury Memorial Hall

CLASS A  
 BEST FRUIT & VEGETABLES

CLASS B  
 FLOWERS:  
 A beach inspired basket of flowers  
 One individual rose  
 A vase of garden flowers of your choice  
 Three identical flowers

CLASS C  
 MISCELLANEOUS:  
 Largest Marrow  
 Longest Runner Bean  
 Heaviest Onion  
 Most unusual shaped fruit or vegetable  
 Tallest Sunflower  
 Limerick with a sun, sea & sand theme  
 A sun, sea & sand picture  
 A sun, sea & sand decorated egg  
 A cup cake with a sun, sea & sand decoration

Entry forms on the day

BIGBURY CHURCH  
 SUMMER FETE!

WEDNESDAY 8TH AUGUST  
 12 - 5pm

MEMORIAL HALL  
 ST. ANN'S CHAPEL

ADMISSION £1  
 Children Free

Stalls, Games, Raffle, Tombola,  
 Light Lunches, Cream Teas.





Should I move or should I stay?

Moving Together Devon was brought to the attention of Bigbury News by the Parish Clerk. I met with Carole Smyth to find out more about what her not-for-profit service might offer.

Carole Smyth, from Moving Together Devon, explained how their aim is to help older and less able people solve this all too common dilemma. 'Circumstances change, particularly as we get older, which means we cannot always adapt without needing help and support' she says.

Moving Together Devon will help as much or as little as each individual need. 'We offer practical and emotional support, ranging from helping find a new home, sorting belongings, dealing with other professionals, right through to moving in. Equally we will support those who wish to consider adaptations by providing information and advice to enable the individual to make an informed choice on the suitability of their home in the long term'.

The lightbulb moment came to form Moving Together Devon when Carole was faced with the dilemma of moving her own mother who is suffering with Dementia. 'Fortunately, she had seen the sense in arranging for a Lasting Power of Attorney (LPA) as we both knew that ultimately I would become responsible for her financial affairs as well as responsible for decisions relating to her ongoing care.'

We visited projects and discussed the pros and cons. Eventually she opted for none of these and instead asked if she could move to live near us in Devon, to a residential home. She felt exhausted by all the discussions and the range of options and entrusted to me not only the task of finding her a home where she would be happy, but also of organising everything to do with selling her property, organising the move, disposing of what she did not want etc.

Moving my mother into the home was straightforward, but the process of emptying the contents of the house took much longer than expected and was both physically and emotionally draining.

She described herself as a war child, which was her explanation for not throwing away useful things as she felt they may be of use later. I called her the original recycler. I felt responsible for going through every room, every nook and cranny, to identify what would go to charity, to family, to the tip, and not trust this to any outside agency.

I have worked with many people over the years who were living in the most unsuitable situations but did not have the support to help them move. Moving my mother helped me realise that along with my husband Tom who is also a Healthcare Professional, we do have the skills and knowledge to help older and less able people to achieve a positive future in later life.

Moving Together Devon is a social enterprise, a not for private profit organisation. Any profits stay within the company to help achieve its social aim which is to provide expert advice, resources and information on housing solutions for all people in later life.

They offer a free consultation visit anywhere in Devon, so if you would like to talk about the housing options available to you, just contact them. A friend or family member might also like to meet them with you.

Carole Smyth
01392 273067
carole@movingtogetherdevon.co.uk



Tom and Carole Smyth (above) Moving Together Devon



VICTORIAN TEA PARTY

We were blessed with a beautiful, balmy day (excuse hyperbole – more to come!). The setting was superb and all decked out with glorious bunting. What a start for a great Victorian Tea Party.

After the usual worry about how many guests were coming, we had full house at around 40. In addition to all the fabulous cakes, scones and sandwiches, Dane provided Pimms which went down VERY well. We did actually have tea as well, plus some homemade lemonade.

Many thanks to the team: Hilary and Dane – for letting us use their fabulous garden and flat; Gill Middleton – for never-ending tea supplies, washing up and looking the part, having been jeered at by various folk on the way! Gill & Peter Cook – for sterling work in setting up and keeping it all going throughout the afternoon; Michael Poynter and Richard Taylor – for keeping order and extracting money for entry and raffle; Helen Smith – for kind use of cake stands, an essential part of the show; and, in no particular order, the splendid cakes, scones and sandwiches – Carol Hext, Liz Edwards and Lazy Cow (and all those made by The Team).

The end result was a great sum of £575, a little above last year, so happy all round. Well done and thank you to everyone who was there.

Alice Taylor
01548 810864
enquiries@silchestercellars.co.uk



Photo (below) Victorian Tea Party



FUTURE EVENTS

Sunday 2nd Sept Garden Produce Show. This year's theme is 'Sun, Sea and Sand'. More information on other pages of this Bigbury News.

Friday 26th October Paddleboat Theatre's 'Rustle' – half term entertainment for children and families. More details in Sept.

Sunday 18th November Churchfitters (folk band) More details in Sept.

FRIENDS of ST LAWRENCE

FOSL help to raise money for the restoration of St Lawrence's Church in Bigbury.

The bells are now unsafe to ring and have not peeled for many years. If you would like to become a Friend and make regular donations please contact the Treasurer, Alice Taylor.



BIGBURY MEMORIAL HALL

Bringing the Community Together

Several of our regular classes are now taking a break for the Summer holidays - see details in the Calendar of Events. We are very fortunate to have such a variety of activities and many thanks to our organisers for running them. If you would like to join any of these classes in the future, the organisers will be very pleased to see you; either just turn up on the day or contact the relevant person for more details.

The Hall AGM was held on 12th July and we actually had a member of the public attend; many thanks, Jean. The existing Committee members were all re-elected. The minutes of the meeting are reproduced below.

On Sunday 2nd September, we shall be holding our annual Produce Show. This year's theme is 'Sun, Sea and Sand' and there will be something for everyone to enter. The details of the categories are elsewhere in this Bigbury News so get thinking and planning now!

We have been fortunate in getting two events sponsored by Villages in Action/Carn to Cove for this autumn. The first is Paddleboat Theatre who will be presenting 'Rustle', a theatrical adventure including puppets, songs and outdoor adventures. The organisers have said this is suitable for children aged 3 years and up and families and we have booked them for the 26th October (Friday of half term week; not Wed. 24th as previously stated).

Finally, you may have noticed quite substantial works being carried out to the outside of the Hall over the last few months. We have re-roofed the rear extension and replaced all rainwater goods, eaves, etc on the whole building. We have also had the outside repainted. The total cost of these works was £11,500.

Sally Watts
Tel. 810373; sally.watts12@btinternet.com

AUGUST CALENDAR OF EVENTS

Table with 5 columns: Day & Time, Activity, Organiser, Contact no. Rows include Aerobics, Pilates, Yoga, Exercise, Youth Club, Bowls, South Hams Shrimps, Fast Fit, Pilates, Strong & Steady, South Hams Filling Station, Zumba.

SUMMER HOLIDAY CLASS DATES

The above classes are having a break in August and will restart on the following dates:

- Jill's exercise classes : Mon. 1st October
Fi's Yoga classes : Mon. 10th September
Valerie's Exercise Class: Tuesday 4th September
Short Mat Bowls: October (2nd Tuesday)

Please contact the group organisers for other dates.



**BIGBURY CARES**  
CHARITY UPDATE to mid June



**LETTER from MINISTER at ST LAWRENCE**

**WHAT SHALL WE PACK?**

Are you one of those who have everything laid out a week before your holiday, ready to be packed? Or do you have a mass panic late at night before you leave? And always with that nagging thought in the back of your mind: what have I forgotten?

Alongside clothes, toiletries and other essentials, there is that pile of vital documents which accompanies us. Not just the tickets, but the passports (what about that visa?), booking forms, insurance documents – and so the list goes on. Let's just hope that the queues at the check-in desk are not too long. Guide books and maps are also on the list. But how many will pack a Bible, God's guide book for life? Will our "religious experience" on holiday be limited to admiring the architecture of an ancient church building? We know where we're going on holiday, but do we know for certain where we're going in life?

The Bible is God's handbook, telling us what he is like and what life is all about. But, like any other guide, it needs to be consulted and followed. It's no use having a fantastic guide book if it's left on the bookshelf! But sadly, that's what so often happens with the Bible. If we want to be a good Christian, a good follower of Jesus Christ, we need to read regularly about him. You can, of course, dip into the Bible at random, and there are nuggets to be found throughout its 66 books. Perhaps better is to use Bible aids, such as those produced by the Scripture Union or Bible Reading Fellowship.

Holidays give us a good opportunity to take stock, and think about the things that get pushed aside in our busy lives. Is God a remote deity or heavenly Father? Is Jesus someone cruelly executed on a cross, or God's Son, whose loving sacrifice can wipe out every wrong we've ever done? So slip a Bible (or its online equivalent) into the suitcase, and learn about the Maker of the wonderful world we enjoy when on holiday. And of our part in that world.

**Michael Tagent**

**Vicar: The Revd Matt Rowland (830260: every day except (normally) Saturday)**  
**Readers: Joyce Howitt (01364 73093), Michael Tagent (810520) www.modburyteam.org**

**LOCAL CHURCH SERVICES AUGUST 2018**

	Aveton Gifford 11.00 am	Bigbury 11.00 am	Kingston 9.30 am	Modbury 9.30 am	Ringmore 9.30 am
5 <sup>th</sup>	Sunday Worship	Communion	Communion	Communion	Sunday Worship
12 <sup>th</sup>	Communion by Extension	Sunday Worship	Sunday Worship	Lay led Service	Communion by Extension
19 <sup>th</sup>	Lay led Service	Sunday Worship	Sunday Worship	Communion by Extension	Village Service
26 <sup>th</sup>	Communion (traditional)	Sunday Worship	Village Service	Sunday Worship	Communion

**50:100 CLUB**

Promoted by **Dane Vanstone**. Tickets for 2018 are all sold! 50% of the money goes in prizes & 50% to the Memorial Hall.

Do not miss out in 2019. The tickets will be on sale from SEPTEMBER.

**50:100 CLUB MAY WINNERS**

- 1st £25 Jacob (c/o Lyn Hiscock)**
- 2nd £15 Dane Vanstone**
- 3rd £10 Chris Curgunven**

**FILLING STATION**

In need of spiritual fuel?  
Top-up here.

We will meet next in September.

The Filling Station is a new informal way of expressing the Christian faith using local mid-week monthly celebration meetings in a cafe-style setting. In a relaxed and friendly atmosphere with tea, coffee and cake. We have a worship time and a speaker. Prayer Ministry is always available.

EVERYONE IS WELCOME.

Filling Station is an inter-denominational fellowship which hopes to benefit the local church. **Gil and Kate Snook** 01548 810017

**THINGS THAT MATTER**

This new feature will introduce charities supported by local residents. If you want more information about these charities, please visit the websites or contact the local promotor.

**John Simes** is supporting two charities by donating a share of profits from the sale of his books (see *Culture Club* feature).

Having worked with young people all his life, he feels very strongly about these causes. Children's lives are broken by war, abductions, communities breaking apart, family tragedy and poverty. He urges us to help if we can. John was born and brought up in Lambeth and Penge, London. **Jigsaw4u** does amazing work with vulnerable young people in London, putting their lives back together, providing mentoring, advocacy and support, and creating future pathways." Learn more here: [www.jigsaw4u.org.uk](http://www.jigsaw4u.org.uk)

As a Principal, John became involved with schools and young people in Uganda; his school organised staff and student exchanges that led to some wonderful story-telling conversations.

**FICH** is working to provide opportunities for marginalized children and girls by creating sustainable work communities.

[www.fichuganda.org](http://www.fichuganda.org)

**GRAND SUMMER RAFFLE**

St. Lawrence Church Bigbury is going to run a Grand Summer Raffle to raise funds for the tower and bell fund which are in need of significant works. Tickets (£1) can be purchased from **Michael Holness**

The draw will take place on **Wednesday 8th August** St Anns Chapel, Memorial Hall. We need generous donations please A.S.A.P – and also lovely prizes!

**Michael Holness** 01548 810116

**BIGBURY CARES**

**KORNILOFF COFFEE MORNING**

On Wednesday 4th July we raised £135 for the Devon Air Ambulance.

Many thanks to those who came and supported us, it was lovely to see visitors from Park Dean who came up the cliff path to join us. None of us know when we will need the Air Ambulance which relies so much on donations and fund raising events.

A big thank you to the faithful few who give so generously each month. There is a lot on offer at our Korniloff Mornings:

- A raffle supported by vouchers from local businesses, Venus Cafe and Fryer Tuck and the Carvery at the Waterfront.
- Guess the weight of the cake, or number of sweets in the jar and a tombola.
- Sale of books, Phoenix cards, bric-a-brac, jewellery, silk wares,
- Homemade cakes and savouries.

On **Wednesday 1st August**, we will be supporting St. Luke's Hospice so we look forward to seeing you between 10.30 and noon at **COURTLANDS, Cleveland Drive**, Bigbury on Sea. Please note the change of venue. **Jean and Yvonne**



**DO YOU SUPPORT A CHARITY? Please send 100 words describing their work and your involvement. Provide a website and contact for the charity so that Bigbury News can promote them. Thank you.**



[www.quayautocentre.co.uk](http://www.quayautocentre.co.uk)  
Suzuki Main Dealer & Ford Authorised Repairer

**LOOKING FOR A NEW CAR?**  
Exciting, affordable, reliable and local  
**BOOK A TEST-DRIVE**

Surplus funds from donations and printing projects carried out by Bigbury News will be allocated to the above charities in accordance with the percentage of the total raised by the end of 2018.





# We Let Our Clients Do The Talking...

“You have been brilliant through the whole process”

“Just to thank you for your enduring patience in the sale of our house”

“We were so impressed with the photography, marketing and honesty of your team”

“Modbury, have been fantastic, very patient and understanding, helpful and professional”

“Thank you for your work and patience”

3 Church Street  
Modbury  
PL21 0WD  
01548 830831  
modbury@luscombemaye.com

**Luscombe Maye**   
Waterside Property

Organic and Vegan; Gluten, Wheat & dairy - free  
Available from HOLYWELL STORES



## HISTORY SOCIETY

On a glorious 5th July morning 29 members were met at the Cafe Liaison in Tavistock by our host from Tavistock History Society – Simon Dell. As an ex policeman in the town he was clearly up on recent events as well as the more distant history which formed the main part of the talk.

We began our walk outside the Bedford Hotel, where Simon showed us many remains in the area of the Benedictine Abbey which was the richest in the South West and around which the town was built. We visited early and later parts of the Abbey still in existence – and Simon detailed some of the seamier side of what went on within its walls! In 1305, with the growing importance of the area as one of Europe’s richest sources of tin, Tavistock was appointed one of the four Stannary Towns appointed by charter of King Edward 1st.

Tavistock remained an important centre for trade and religion until the Dissolution of the Monasteries when the Abbey was demolished in 1539. From that time, the dominant force in the town became the Dukes of Bedford, and many local buildings (including the Town Hall) are in the vernacular “Bedford Style”. By 1800 copper was being mined locally, and the Dukes arranged for French prisoners of war to dig a canal to carry the copper to Morwellham Quay on the River Tamar.

Perhaps the most famous person born near Tavistock is Sir Francis Drake, the first Englishman to circumnavigate the world and Commander of the fleet that defeated the Spanish Armada. Simon also mentioned many others lesser known, including W H Smith who was expelled from the Grammar School – for being “stupid and a dim-wit” - but was clearly not so dim or without talent as he went on to great things in the newspaper industry.

Our walk ended by the copper statue of the 7th Duke celebrating the Bedford’s long involvement in the town’s development, then it was back to the Cafe Liaison for an excellent lunch in the upstairs restaurant reserved for us. A superb ending to a very informative morning.

Unfortunately for many of the men present the afternoon followed with a slog around the Pannier Market (established in 1105 for the monks of Tavistock by Royal Charter of King Henry 1st) and the town’s many more modern ladies’ clothes shops!

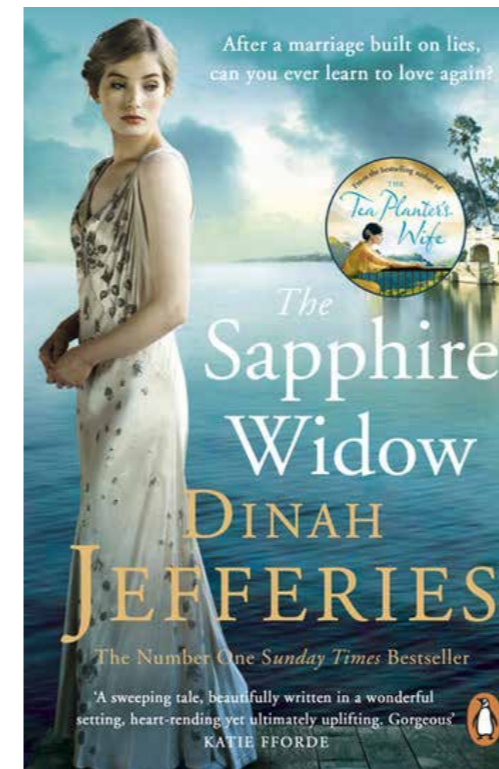
**Peter Cook**



John Simes, author of The Dream Factory



Bigbury Bookworms getting down to business.



## BIGBURY CULTURE CLUB

### LOCAL AUTHORS

**John Simes - The Dream Factory**

Perched on the shelf near the bread counter at Holywell Stores, you will find a copy of **The Dream Factory** written by local resident, **John Simes**. The book will be signed on the inside cover by the author, who lives in the valley overlooking Challaborough Bay. I took my own signed copy to Kenya with me in July. It is inscribed, “To Louise, Look after the world inside yourself.” Was it because I was reading the book very close to the Equator that I felt my head was spinning when I closed the book? There is a surreal sense of involvement as the story, woven by John’s magic shuttle as it passes to and fro across the pages and draws the reader into the Dream Factory.

I wondered how long it took him to create **The Dream Factory**. Perhaps he did not create it – just discovered it? He must have gazed out to sea from the coastal paths and searched the world within himself to craft this magical debut novel so clearly set in the woods, vales and the cosy nooks at the Journey’s End pub in Ringmore. He masterfully creates a palette of colourful characters that melt into each other’s lives as the story comes in and out of focus. **Monty the Pub Cat**, who now holds court in Bigbury News, skips from chapter to chapter, along fences, out of pub windows, following clues and people’s lives with the cunning of an adept feline hunter. The plot twists and darts like a falling autumn leaf that tricks the observer, who tries to anticipate its trajectory towards the ground.

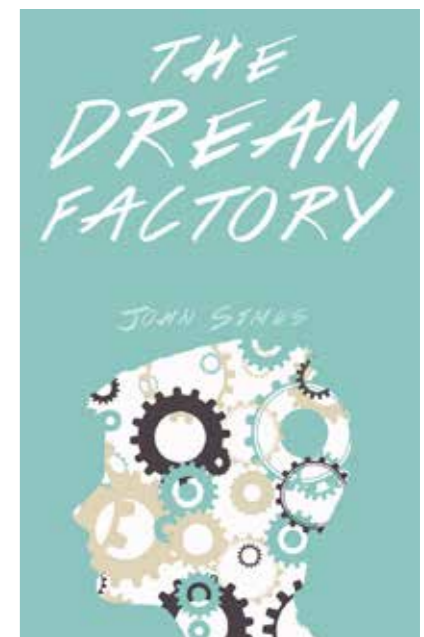
I day dreamed about the gun-slinging spinster in tweeds. Was she based on John’s imaginings of any of the Innocents that frequent the Holywell Stores or attend the events in the Memorial Hall? It’s too late, if that was not his intention because I will be taking a much closer look at the bulging handbags which any suspect Mata Haris might bring to the next fund raiser! Is the French criminal mastermind, who seems to move unchallenged into the abandoned home of a local resident – actually a clandestine second-home-owner? There is a female version of Steve Comely, our Neighbourhood Watch Coordinator, patrolling the events in the story and guiding our hurried thoughts about the outcome. Look left at the bread counter at Holywell Stores and spend £7.99 more than you planned to have your very own guide to the Dream Factory. John donates to the two charities profiled in the *Bigbury Cares* feature (*Things that Matter*) – from the proceeds of his book sales. Highly recommended. I laughed until the tears relieved my aching sides.

John Simes taught English and Drama and served as the principal of two UK comprehensive schools. In 2004, he founded Collingwood Learning - a consultancy for

school improvement. In 2013, he established Collingwood Publishing Limited. John was brought up in Lambeth and Penge (London) – locations he revisits in his latest book, **A Game of Chess**. John lives with his family in Challaborough, where he grapples with his addictions to cricket, poetry, and the stunning local landscape, as well as his continuing fascination with travel, schools and teaching.

John visits schools to run creative writing sessions on **The Dream Factory** and **A Game of Chess** and promote reading for pleasure through the Society of Authors Reading for Pleasure award scheme. You can find out more about John at [www.visithedreamfactory.com](http://www.visithedreamfactory.com). The website enables you to enjoy Mark Duffield’s interpretations of the songs from **The Dream Factory**, information about the locations, and much more. You will also find teaching ideas for creative writing – suitable for both adults and young people.

**Louise Wainwright**



**BIGBURY BOOKWORMS**

We met at my house for our July meeting and discussed the book chosen last month by Julia ‘The Summer Read’ by Jove Jansson. This little book was just as titled - a ‘summer read’. A light, easy, pleasant book - just the thing to take on holiday. There was a varied response to this book. Most people thought it delightful, others thought it had no substance or story and one described it as ‘whimsical’. However, all agreed that they felt they could relate to the grandmother in the story and agreed it was well written. As the member who hosts the meeting chooses the next book, I have chosen **‘The Sapphire Widow’** by Dinah Jeffries and this will be discussed when we meet next on 1st August at Erica’s home.  
**Hazel Osborne**  
New members are welcome.  
Call Iris on 810365.



...in the South Hams and beyond

Adverts • Artwork  
Banners • Brochures • Branding  
Business Cards / Stationery  
Digital Art • Flyers • Invitations  
Labels • Leaflets • Logo Design  
Menus • Posters • T-Shirts  
Wedding Stationery and more!

find out what the moo can do for you...

☎ 07856 550 239  
✉ devoncowone@gmail.com  
www.devoncow.co.uk

**Ged King Plans**

**Ged King Plans Ltd**  
Architectural Design & Building Consultant

For peace of mind with your building project

07805-589240 / 01752-408792

info@gedkingplans.co.uk

Planning and Building Regulation drawings  
new dwellings • barn conversions • home extensions  
• loft conversions • commercial designs

*Fibre Fresh*  
**CARPET CLEANING**



**Carpets**  
**Upholstery**  
**Rugs**  
Stains & Odours  
Removed  
End of Tenancy  
Low-Cost &  
Quick Drying

Local Professional Company  
**www.Fibre-Fresh.co.uk**  
**01548 550906**

**Need A Babysitter?**

*CATHY will be happy to help*  
All Ages  
Enhanced DBS checked  
Qualified Brownie Leader  
First Aid certificate  
Evenings & Weekends

01548 810628 / 07980 633956  
cathshea@btinternet.com

**MARTIN LEY**

**PLUMBING & HEATING**

GENERAL REPAIRS & NEW INSTALLATIONS



**Modbury**  
Tel: 01548 830609  
Mobile 07811 934551

**WHK Services**

Devon Ltd



**Complete Property Management & Professional Cleaning**

Unit 7  
Admiral Court  
Nelson Road  
Dartmouth  
Devon  
TQ6 9HU  
Tel: 01803 839683  
www.whkservices.com

**BIGBURY PAINTERS and DECORATORS**

Provides a residential and commercial service from house painting to commercial decorating. Interior or exterior. Trustworthy, local and reliable service. Reasonable rates.



painting and decorating

Contact - ROY or ALVIN  
07591 656366/ **01548 831686**  
Email -  
royparnell@hotmail.co.uk

**CHAPMAN**  
electrical



Domestic & Commercial  
Electrical Contractors  
Over 20 years serving Bigbury  
and the surrounding area  
Fully NICEIC approved contractor

Tel: (01752) 896183  
Mob: 07971 855852  
Or email:  
enquiries@chapmanelectrical.biz



**ACE IRONWORKS**



Railings ~ Gates ~ Handrails  
Spiral Staircases ~ Security Grilles  
Balconies ~ Fire Escapes ~ Balustrading  
General Steel Fabrication  
Galvanizing And Powder  
Coating Available

Tel:- **01752 670713**  
2 Miller Court - Millbay Road - Plymouth - PL1 3LQ  
e: aceironworksltd@gmail.com

Top Quality Products And Service In The South Hams And Plymouth Area

**AYRES HAYNES ARCHITECTS**

**RIBA**   
Chartered Practice

tel 01752 408051  
email admin@ayreshaynes.com  
web www.ayreshaynes.com

Top Floor Unit 2 Western Hangar, Lawrence Road, Mount Batten, Plymouth, PL9 9SJ

**SOUTH HAMS ELECTRICAL SUPPLIES**

• SATELLITE & TV SERVICES  
• Freeview Digital TV • Freesat HD  
• Aerial Installations • Data/Telephone  
• Aerial Repairs

Tel: (01548) 559001

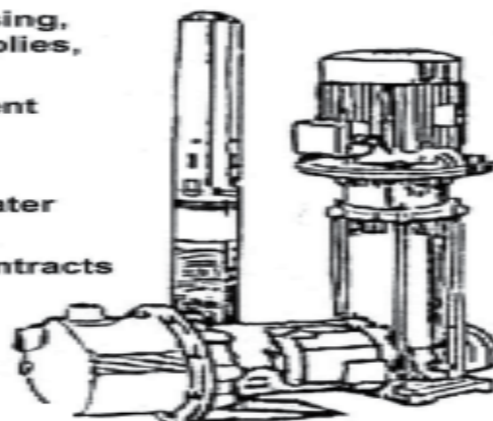
Mobile: 07773 325316

Springfield, Loddiswell, Nr Kingsbridge. TQ7 4EL

Email: colinjarvis.cj12@outlook.com

**CPMR & CHENPUMP UK Ltd**  
PUMP & WATER ENGINEERING SPECIALISTS

Boreholes, Drilling & Dowsing,  
Wells & Private Water Supplies,  
Sewage & Waste Water  
PH, UV, Iron Water Treatment  
& Filters  
Pipes, Spares & Fitting  
Pressure Boosting, Rainwater  
Harvesting  
Service & Maintenance Contracts  
Sales, Service & Repairs  
Site & Full Workshop  
Service



Tel: **01752 695 688**

Email: plymouthservice@cpmr.co.uk

Emergency Callout Service: **07426 027 372**

A family company providing a professional service  
Covering all of Devon and Cornwall Inc the moors

**JBS**

**John Butler Stonework**

Quality Stonework  
Building & General Maintenance  
Free Estimates  
Efficient Service  
Based in the South Hams

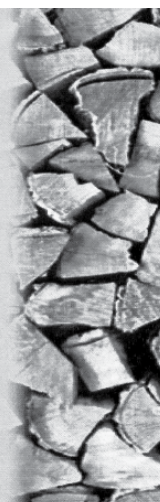
**John Butler Services**

**Plumbing Maintenance and Repairs**  
Boiler Services and Repairs  
Gas, LPG and Oil  
Caravans & Holiday Home Safety Checks  
Gas Safe Registered  
Emergency Call Outs  
Tel: **01548 810462**  
or **07977 962091**

**CHAPMAN CONTRACTORS LTD**  
**SEASONED LOGS**

sold by dumpy bag, netted or bulk deliveries  
**NETTED KINDLING AVAILABLE**  
**HOUSE COAL AND SMOKELESS NUGGETS**  
• TREE AND HEDGE CARE • LAWN MOWING  
• FENCING AND GARDEN WORK  
• FULLY INSURED • 17 YEARS EXPERIENCE  
TIMBER PROCESSOR, CHIPPER AND  
KINDLING MACHINE FOR HIRE ON OR OFF SITE

CONTACT NEIL CHAPMAN  
01548 810016/07718 722680





## BIGBURY BIO BLOG

It's time for an update on the Aune Conservation Association (ACA) for Bigbury News' readers! Since its foundation, the ACA - an environmental conservation charity focussed on the South Hams' Avon - has depended exclusively upon limited funds generated by our lifetime membership subscription (only £20 for a family!), occasional charitable donations and money raised through social events. However, our limited income has always somewhat restricted our activities. So, we applied and have been accepted to be a beneficiary of the new SHDC-sponsored Sea Moor Lotto, which aims to help a variety of local causes. Now, we need the support of at least 50 donors to derive the maximum benefit from the lottery. Please help by going to our lotto webpage by typing the following address into your internet search engine: [www.seamoorlotto.co.uk/support/aune-conservation-association](http://www.seamoorlotto.co.uk/support/aune-conservation-association) and making a donation. Look out for the logo - thank you!

One of our main priorities is the quality and quantity of river water because this controls the health both of the river and of what lives in it, and much that goes on in the surrounding environment. Did you know that in dry weather, thanks in part to the Avon Dam, the upper reaches of the Avon become almost dry, stranding any mobile or migrating species wherever they happen to be? We have worked with SWW, the Environment Agency and the Avon Fishing Association to try and alleviate this problem over the last few years by arranging for the release of an emergency 'fish bank' of water to be released from the dam, as agreed when the dam was built back in the 1950s but never previously implemented! Other areas of interest include river siltation, habitat regeneration, pollution and safe navigation. These areas and others are covered in varying degrees on our website at [www.auneconservation.org.uk](http://www.auneconservation.org.uk)

Many different groups of people depend upon the river for a variety of reasons and most of them care deeply about the river and its welfare. However, we are keen to raise awareness amongst all who live and work in the Avon catchment of the need for careful husbandry of this priceless resource. We work together with other community groups, local government, businesses, landowners, farmers and national agencies many of whom share our goal but, perhaps, without the same focus. Our membership consists, mostly, of local people and meets several times a year for lectures, organized walks and social get-togethers. In addition, there are opportunities for volunteers to join in estuary clean-ups and occasional special projects.

Our existing funds are spent upon such activities as: arranging educational workshops for local schools e.g. on South Efford Marsh; organising expert talks on topics of interest (e.g. micro-plastic pollution, water mills of the Avon); supporting the Avon Patrol to prevent

unlawful water-based activities such as speeding boats and associated environmental damage in the estuary; participating in the South Devon Catchment Partnership; and organising the Devon Avon Group to improve both the quality and quantity of river water from moor to sea. However, we'd like to do more with these initiatives and others to help the public enjoy the unspoilt and idyllic environment of our wonderful river and estuary. For example, with adequate funding, we could arrange for regular independent testing of river water quality (several sewage treatment works discharge into the Avon and phosphate levels below Loddiswell are too high), do more to help the Avon Patrol and, maybe, even improve the Avon Estuary ferry from Cockleridge (Bigbury) to Bantham harbour, which forms an important but under-used link in the SW Coastal Path.

I heard just before the Avon Estuary Forum in May that this vital service was to be withdrawn, as a cost-saving measure, on the recommendation of the former Salcombe Harbourmaster. None of those organisations that had contributed to the patrol for many years had been informed, including the ACA; one had even been invoiced for their 2018 contribution! After a prolonged series of email enquiries and complaints to Parish, District and County Councillors, as well as the Manager of Commercial Services at SHDC, I was informed that some way would be found to resurrect the patrol for July, August and September but that the future of the service beyond 2018 was uncertain. However, a new Salcombe Harbourmaster has been appointed and, as of today, I have been told by him that the usual patrol service will be resurrected from 1st July and I sense that we can expect a more enlightened and collaborative approach towards our estuary from SHDC in the future.

Recently, DEFRA launched a consultation about proposed new Marine Conservation Zones (MCZs). One of these proposals covers the tidal zone of the Avon Estuary, up to Venn Weir, as shown in the map below



As the DEFRA Fact Sheet notes, 'the mouth of the estuary has semi-exposed rock platforms with rich rock pool, under-boulder and overhang communities on the lower shore. The estuary is an important system supporting a variety of habitats and wildlife. Various species of worm and crustacean can be found here. The rare tentacled lagoon worm (*Alkmaria romijni*) has also been recorded and lives in the thick, deep mud of the estuary. These small worms, up to 5 mm long, with eight tentacles, live within tubes made of mud in sheltered lagoons and estuaries and are particularly vulnerable to changes in their habitat. The Devon Avon Estuary is an important nursery area for fish species and is potentially important for seahorse populations as it provides suitable food and shelter. The salt marshes provide habitat for crustaceans, molluscs and a nursery area for fish, as well as rich feeding grounds for birds.' The ACA has responded to the consultation with strong support for a new MCZ around the estuary but has recommended extending the proposed boundary to include South Efford Salt Marsh, a relatively new nature reserve that is managed by the Devon Wildlife Trust, and the full area of the established bass nursery, which stretches beyond the mouth of the estuary - out to Burgh Island, as shown in the South Devon AONB's Estuary Management Plan.

On an unrelated topic, you'll all be aware of the recent international fuss about possible abuse of database information stored by organisations (usually known by the acronym, GDPR). These regulations have meant that the ACA was required to invite all its members, many of whom live in Bigbury parish, to grant permission for their details to be stored on a new database. As a consequence there has been a considerable reduction in our membership number! I am anxious that anybody who has been eliminated from our new database should be given the opportunity to re-join. Please contact me so that I can correct the situation. Good luck with the Sea Moor Lotto!

**Stuart Watts**  
sdmw2@btopenworld.com  
01548 810373



Support local good causes

Win up to **£25,000!**

[www.seamoorlotto.co.uk/support/aune-conservation-association](http://www.seamoorlotto.co.uk/support/aune-conservation-association)

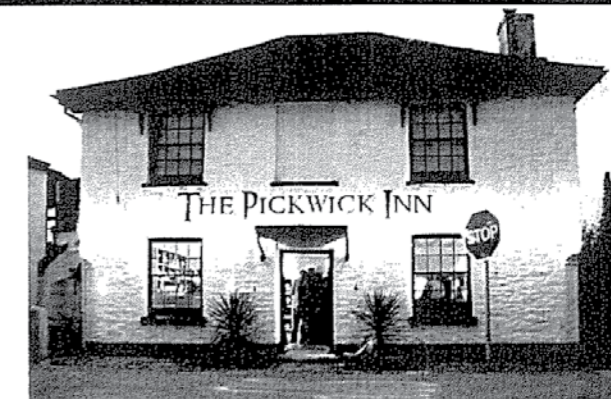
Below: **Matt Palmer** from **Millenium Eagle Jazz Band** for KBJ members - why dont you join in the fun on 7th August at Fishermans Arms in AG?



## THE PICKWICK INN

[WWW.PICKWICK-INN.CO.UK](http://WWW.PICKWICK-INN.CO.UK)

01548 810310



KINGSBRIDGE JAZZ CLUB  
AT THE JAZZ CELLAR  
AVETON GIFFORD



"Kingsbridge Jazz Club" is now firmly established at The Fisherman's Rest on the first Tuesday of the month, starting at 7.30pm (doors open 6.30). It has become a unique venue, much loved by the many top Jazz Bands who perform there.

We have professional and international musicians who play not only in the UK but around Europe and as far afield as New Orleans - some indeed have been granted the freedom of The City of New Orleans.

Come along and enjoy the high standard of live music that you would normally only expect to experience at a large city venue.

Bands for the next 2 months are as follows:

3<sup>rd</sup> July ~ Millenium Eagle Jazz Band - 7<sup>th</sup> August ~ Dart Valley Stompers

[www.aveton-gifford.co.uk/facilities/kingsbridge-jazz-club](http://www.aveton-gifford.co.uk/facilities/kingsbridge-jazz-club)

[www.facebook.com/kingsbridgejazzclub](http://www.facebook.com/kingsbridgejazzclub)

## Eryer Tuck's Take Away

CHALLABOROUGH BAY  
Tel: 01548 810425

Award-winning  
**FISH & CHIPS**  
Pasties - Pizzas - Pies

Salcombe Dairy Ice Cream

Beach Goods - Wet Suits  
Boards for Hire

HOURS OF OPENING 1st April-end Oct

Daily 10am to 10pm

## The California Inn

Award winning A La Carte Menu and Bar Menu  
Function/Meeting Room  
Free WiFi Dog Friendly

Happy Monday

Pie & Pint £10

Ruby Tuesday

Curry & Pint £10

Jockey's Wednesday

Fish & Chip & Prosecco £10

Jo's Thursday

Steak £12.95

Food Daily

12-2pm & 6-9pm

Sunday Lunch

12-2:30

California Inn

California Cross

Ivybridge

PL21 0SG

[thecalinn@yahoo.com](mailto:thecalinn@yahoo.com)

[www.thecaliforniainn.co.uk](http://www.thecaliforniainn.co.uk)

TEL: 01548 821449

## The Journeys End Inn

A warm welcome awaits you in our traditional 13<sup>th</sup> century pub

Award winning food and ales, large beer garden.

Tues-Friday 12.00-3.00 & 6.00-11.00

Saturday & Sunday open all day

Food available from 12.00-2.00 and 6.00-8.30

(No food Sunday evenings)

(01548)810205 The Journeys End, Ringmore, TQ7 4HL



## BUGS LIFE BBQ

Thanks to all those who joined in to support the Bug's Life BBQ to raise money for Bigbury News and local charities. We raised £138. Thanks to all. The event was sponsored by Biobest and Agralan who provided live samples of good bugs. [www.biobestgroup.com](http://www.biobestgroup.com) and [www.agralan.com](http://www.agralan.com) If readers want to order bugs for their gardens they should contact Bigbury News Editor who can organise a discount which we can either share or you can donate this to Bigbury News. Thanks.

Particular thanks to **Juliette Jackson** and her daughters who provided the up-close experience of bugs attacking bugs with their microscopes linked to TV screens, lots of weird insects embedded safely in resin blocks. Juliette was backed up by **Stuart Watts** on the science tables. My daughter, **Claire Rooney** provided the face painting experience which went down surprisingly well, with the young at heart but reasonably grown up attendants. really enjoyable afternoon.

Helper, **Lucinda Ellis** left the Hall, sporting a ladybird tattoo (photo bottom). We were all entertained by **Peter Cook's** impersonation of a beautiful courgette and **Chrissie Wright's** debut as a succulent greenfly under attack by a parasitic wasp! Quite unexpected skills.

We were particularly pleased to welcome **Pete Marsh's** heckling form the front row – the spider mite on his tomatoes now don't stand a chance. **Rose Owen** went home with biological control agents to wage war on the mealybug attacking her *Sterptocarpus*, with grandson **Toby**, riding shotgun. My daughter, **Charlotte Wainwright**, made the lovely Bugs Life poster for us.

After a lot of talking about biting, sucking, probing insects and private parts – we were all ready for food! **Dane and Hilary Vanstone** donated the edibles and Dane was ably assisted by **Richard Taylor** on the BBQ front. A really enjoyable afternoon. Thank you.

**Louise Wainwright**

## NEIGHBOURHOOD PLAN

Neighbourhood Plan Progress Report 11 July 2018

### Community-led housing scheme

Revised heads of terms for the Land Option Agreement has now been sent to the owners of the site and SHDC are awaiting written agreement to these so that the legal agreement can be prepared.

Fees for the consultants are now being considered by SHDC and a further meeting with the Architect to further pursue the draft concept plan is in process.

A site meeting has been held with Roger English of the AONB Unit. He has agreed in principle to the proposed development and given some helpful advice in terms of the layout and design so that it will fit in with the landscape.

### Views, vistas and local heritage list

We will shortly be doing a consultation regarding the Views and Vistas. A Draft Local Heritage List was sent to Devon CC Heritage Division and Richard Gage of SHDC who have both given very positive feedback with Devon CC suggesting some further sites that we might consider.

We have still not carried out the walkabouts with the local youth but this is being arranged.

### Consultations

We have had a meeting with **Nicholas Johnson** and officers of the **Golf Club** to discuss the future of the Golf Club and the Bantham Estate. Some interesting ideas in terms of expanding the golf club to include better restaurant facilities, a possible events room and some accommodation for visitors is being investigated. This might be on a different part of the golf club site.

We have also had a meeting with **Tom Jones**, Policy Officer of SHDC to run through the draft policies. He has given some initial useful feedback and will be coming back with more comments in due course. He also suggested that AECOM should now carry out their Strategic Environmental Assessment to avoid delays to the process rather than waiting for the Regulation 14 Consultation.

We have therefore asked AECOM to pursue this. Survey of dwellings used as a principal residence, second home or holiday lets The survey of properties throughout the parish is almost complete. This is to establish the number of residences; second homes and holiday lets.

**Cllr Valerie Scott**,  
Chairman of Bigbury Parish Neighbourhood Plan Steering Group

## BIGBURY PARISH COUNCIL MINUTES - Wed 11th July 2018 - Memorial Hall St Ann's Chapel

PRESENT: Cllrs: C Carson, G Rosevear, S Smith, E Huntley (D. Cllr.), C Case, V Scott and Clerk R Matthews. Five residents were also in attendance.

### 1.0 Declaration of Interest

No declarations were made

### 2.0 Apologies for absence:

Cllr. H Getley and C.Cllr R Gilbert

### 3.0 Minutes meetings on June 13th 2018

Cllr. Rosevear proposed Cllr. Smith seconded and Councillors voted unanimously to accept the minutes, duly signed by the Chairman.

### 4.0 Matters arising (actions) from last meeting and not covered in this month's agenda:

Clerk had been in contact with British Telecom in respect of the poor condition of the three operational phone boxes in the parish and that supporting photographic evidence was to be supplied. Provided BT accept the visual evidence, they would agree to repaint and renovate but stated that this would not be completed until 2019 – between May and September. Clerk also to submit evidence of condition of the unused phone box (not operational) situated at the old post office in Ringmore Drive.

Clerk confirmed the installation of a Variable Average Speed review (VAS) would be undertaken by Devon Highways and Adam Keay agreed to move this project forward.

Clerk confirmed that the grant of £3000.17 had been received from the Devon Air Ambulance Trust and that the installation was to be completed later this month.

Cllr. Case advised a full update on the Play Park project would be given at the September Parish Council meeting.

Clerk confirmed a new two-year contract had been signed with BT to provide broadband access into the Memorial Hall. The contract renewal rate is £5 lower per month than the current price.

### 5.0 Open session

Resident A raised concerns in respect of the **Lincombe Barn** planning application and these comments are included in the relevant section of Planning Matters – Topic 7 below.

Resident B asked the Councillors if they knew who owned the land (grass verge) to the front of **Park Cottages**. The Councillors were not aware of who the land belonged to and advised the if it were to be used for parking, with changes to the hedge and wall etc., it would be advisable to discuss the matter with South Hams District Council planning dept.

Resident C wished to ask about the recent communication from **Gigaclear** in respect of

the roll out of Super-Fast Broadband across the Parish. This matter is covered in the correspondence section – Topic 10 below.

### 6.0 District Councillor's report

**D.Cllr. Huntley** provided these updates:

Further to the Gigaclear announcement (see correspondence – Topic 10 below), D. Cllr. Huntley had approached SHDC to see if the potential option of linking the car park ticket machines to broadband could be further expanded to cover a charging structure for access to the public toilets. Such an all-encompassing option would remove the need for change to be given every day by the staff in the Beach shop.

SHDC had now provided an Operative to undertake regular cycles (three times per day) of rubbish removal from the three main beaches – Island, Sedgewell and Challaborough. This service would stay in place throughout the summer but SHDC had declined to provide larger bins to accommodate the waste. A request for additional bins of a smaller size has subsequently been made.

As **Cllr. Getley** was unable to attend this evening's meeting, D. Cllr. Huntley advised that, as discussed in the June meeting, new signs for the beach and car park area were being made. Clerk confirmed that the Parish Council had agreed to contribute to the overall cost of this enterprise.

D.Cllr. Huntley added that National Trust had been asked to review the positioning of signs on and near the Clematon Hill footpath. D.Cllr. Huntley advised that SHDC had introduced a 'Communities Together Fund', similar in nature to the TAP Fund but only relevant where two or more parishes join together on a specific project.

### 7.0 Planning related matters

**Clerk** confirmed that all owners/agents responsible for the three planning applications to be discussed had been advised of the revised start time of the meeting.

### 1925/18/VAR Merrylees, Ringmore Drive.

Councillors reviewed the drawings which related to landscaping and traffic management variations within the boundaries of the site. These variations were not deemed to be detrimental to the project or the immediate surrounding area and Cllr. Carson proposed the Parish Council support the application. Cllr. Case seconded the proposal which was agreed by the Councillors with the exception of Cllr. Huntley who abstained from the vote.

### 1857/18/HHO Spring Garden, Bigbury.

Having reviewed the plans on line and on the large screen at the meeting itself, the Councillors were of the opinion that the proposed changes were in keeping with the area.

**Cllr. Case** proposed the application be supported. **Cllr. Rosevear** seconded the proposal which was agreed by the Councillors with the exception of **Cllr Huntley** who abstained from the vote.

**2139/18/HHO Lincombe Barn.** With reference to the Open Session, Resident A expressed concerns that her garden, part of an adjacent property would be overlooked from the proposed balcony and that her and her family's privacy would be compromised as a result of its construction. Significant time, cost and effort had been invested in making this section of her garden an area where the family could relax peacefully and in isolation. This concern was further heightened as the barn had been sold as a business and would become a holiday rental house for 'larger' groups of people. Resident A requested that a privacy screen be added to the design to minimise the loss of privacy.

The Councillors debated the concerns raised and reviewed the plans submitted. **Cllr. Rosevear** proposed the Council support the application but with the condition that an opaque privacy screen made of an appropriate material be incorporated into the design. **Cllr. Smith** seconded this proposal which was agreed by the Councillors with the exception of **Cllr. Huntley** and **Cllr. Scott** who abstained from the vote.

**Update on Neighbourhood Plan** – Cllr. Scott provided update which is published in Bigbury News page 30

**8.0 Finance: Approval** of payments to be made and presentation of finance statement

**Cllr. Rosevear** proposed the financial statements and recommended payments be accepted which was seconded by Cllr. Smith and all councillors agreed. Clerk was to raise the following payments:

**£60.00 – Kingsbridge Websites** – annual maintenance fee

**£159.66 – V Scott** – replacement cheque for cost incurred in preparation of the Neighbourhood Plan

**£840.71 – R Matthews** – Clerk salary £540.00 qtr. ended 30.06.2018 and expense £300.71 for the same period – reviewed and authorised by Chairman

**£200.00 – Hope Cove Lifeboat** – annual donation

**£35.84 - BT group** – rental cost line and broadband Memorial Hall. Paid by direct debit

Several cheques raised at previous meetings had ben 'lost' and the bank was to be advised to stop these cheques from being paid.

Action Clerk





## BIGBURY PARISH COUNCIL MINUTES

Clerk showed a slide of the current cash book and bank reconciliation statement showing a balance of £24,090.98 as at June 30th 2018.

Clerk showed a statement of restricted and reserved funding with a balance of £3,090.06.

Clerk showed details of S106 funds held by SHDC - £162,771 for affordable housing projects and £24,194 for OSSR projects.

9.0 **Finance – deposit** and reporting of surplus funds from disbanded Shrimps  
The main topic relating to the management of the surplus funds was deferred to the September meeting.

Cllr. Case did however have a communication from Bigbury Youth Club which she shared. 'The Bigbury Youth Club have received a grant from the British Science Association towards the cost of a trip – an awesome experience with a sleepover with the sharks at the Aquarium, rather than just making it a day trip. The event will cost £1,500 and the Youth Club are planning to invite siblings, although those younger than eight years old must be accompanied. The Youth Club has reserves of £1,000 and consider it acceptable to request a £10 contribution from those attending.'

The award was made to SEADREAM, which is a non-profit community interest company (see website or facebook pages). There have been several science sessions in the Youth Club and a donation of £350 from the Parish Council would be a fantastic contribution to enable the planned sleepover to take place. We would also like to invite some other local children; they may join the Youth Club in the future.

Cllr. Huntley raised a concern that the charge from the Aquarium was rather high, although other Councillors did not share this view. Cllr. Case proposed the £350 funding from the 2018/2019 precept be re-allocated as per the above discussion. Cllr. Rosevear seconded this proposal which was agreed by all Councillors

### 10.0 Correspondence

Correspondence can be found in the information pack displayed at the meeting and subsequently uploaded to the Bigbury Community website. Content includes a communication from SHDC in respect of an increase in the annual charge for inspecting the Play Park.

The main item of correspondence received related to Gigaclear and a notification that cables would be laid across the entire Parish

in the period starting 1st August 2018. After general discussion and little means of clarification, it was decided to organise a public meeting to discuss all aspects of the topic.

Action Clerk

### 11.0 Agenda items for next meeting

Carry forward from this meeting to September - Playground, Centenary event to commemorate the end of World War 1 and review of Precept allocation not spent so far this year – particularly the need to renovate, tidy, paint etc. important areas around the community such as Millennium Steps and the boat in the lay-by.

Add to the October meeting

– Actions needed to encourage and increase the use of the football field to the rear of the Memorial Hall

**IMPORTANT NOTE – IT WAS DECIDED TO BRING THE DECEMBER MEETING FORWARD BY ONE WEEK TO WEDNESDAY DECEMBER 5TH**

The meeting closed at 6:29 pm - the next meeting is to be held on **WEDNESDAY September 5th at 7:30pm**

**Keep up to date on local security and fraud alerts by signing in to Devon and Cornwall Alert. You can choose how to receive alerts and about a wide range of topics. You can unsubscribe at any time.**

<https://alerts.dc.police.uk>



## BIGBURY LADIES

As most people know Flete House contains residential apartments, but only on a few days of the year, the management arrange tours of Flete House limited to 20 people. Thanks to Jean, who spotted the advert in the Gazette and arranged for eleven ladies to visit this beautiful house.

The tour consisted of a guided walk through five large rooms on the ground floor, the main entrance, the dining room, the library, a lounge and the billiard room. In every room, there were magnificent wood panelling and carvings and stunning embossed plaster ceilings. In the library, of particular note, there were four small stained glass panels by Burn-Jones and carvings in stone by William Morris.

Our guide gave us a comprehensive insight into the history of Flete House and its owners, including an important figure in the court of Henry the VIII. Many Royals and important dignitaries have visited there over the years too.

After the tour, we were allowed to wander the extensive and beautifully maintained gardens. As a special treat, Jean presented us with a superb cream tea which we ate on one of the terraces; nothing beats an impromptu feast in beautiful surroundings! Many thanks to Jean for arranging this special visit and of course for the cream tea.

On 15th August at 12 noon, we shall be meeting at Helen Smith's for our customary Summer lunch. (bring a plate) All Welcome.

Rose Owen

**DISCOVERY SURF SCHOOL**  
Bigbury on-Sea & Challaborough Bay

**Lessons**

- Beginner & Advanced
- Discounted Private Family
- Taster Session 1 Hour
- Supervised Practice
- Special Needs
- Surf Club
- Stand Up Paddle
- Surf Camp
- All equipment is provided

**Hire**

- Surfboards & Wetsuits
- Stand Up Paddle Boards
- Single & Double Kayaks
- And Beach Shop Sales

**★ Guaranteed ★**  
We'll get you standing up and riding in your first lesson.

07813 639 622 • [www.discoverysurf.com](http://www.discoverysurf.com) • [martin@discoverysurf.com](mailto:martin@discoverysurf.com)

**Sailing ahead.**  
For customers who expect more from their estate agent.

**Marchand Petit**  
ESTATE AGENTS

[marchandpetit.co.uk](http://marchandpetit.co.uk)

SOUTH HAMS' LEADING ESTATE AGENT

PRIME WATERFRONT & COUNTRY HOUSE

DARTMOUTH KINGSBRIDGE MODBURY NEWTON FERRERS SALCOMBE TOTNES LETTINGS

**Devon and Cornwall Alert**  
Keeping our communities in the know

[Sign In](#) [Register](#)

**TMP BUSINESS AWARDS**

**Bigbury Golf Club**  
HAVE BEEN SHORTLISTED FOR  
TMP BEST IN BUSINESS –  
BEST GOLF CLUB 2018

**BIGBURY GOLF**

**YOUR GOLFER**  
magazine

Devon & Cornwall Golf Club of the Year 2018



Bigbury Ladies outing to Flete House





## NINETEENTH HOLE

The period mid-June to early July was incredibly busy at Bigbury Golf Club. To summarise, some major events included:

The Ladies and Gents Handicap and Scratch Club Championships: When entering this competition, the Silver Handicap players are aiming to be crowned the Bigbury Club Champion for the year. Playing in brutal conditions this year, the winners this year were Darren Mutton and Amanda Burchell, having played 36 holes of golf. However, the men had a very dramatic finish to their competition; after 36 holes two men Darren Mutton and Paul Kingwell could not be separated. When there is a tie, the rules call for a four ball play off, but Darren and Paul could still not be separated. So, back down the 1st hole for a dramatic "sudden death" play off. Darren won on what was effectively the 41st hole! There is also a gents and ladies Handicap Trophies, and these were won by Julie Leach (recording just one shot more than her daughter Jess), and Keith Naylor who had a handicap score of just 66 for his morning round. In the very brutal conditions, this was an exceptional score.

Four Open Competitions have been hosted, one mixed, one ladies and two gents.

Bigbury Golf Club was proud to host the prestigious Devon Men's Veterans Golf Association's Western Morning News Seniors Inter Club Trophy Open. 154 players from all the major clubs across Devon took to the impressively prepared course to contest this Trophy. The day was considered a great success by the organisers.

The Ladies 3 Ball, the Seniors and the Mixed Opens were entered by 290 golfers. They came from across Cornwall, Bristol, the Midlands, Dorset and of course Devon.

The Seniors Open included fund raising for the Bigbury Golf Club's three Captains Chosen Charity for 2018, the Devon Blood Bikes, and at least £500 was raised. On this day, some rain came in early afternoon, but this in no way dampened the spirits of those playing and excellent scores were recorded.

The winning Bigbury pair, Rob Luckens and Mick McNulty, recorded a very good 46 points. It was appreciated that one of the Volunteer Bikers was on the first T from the first groups going off until the final group took to the course.

William Barons, Bigbury's Seniors Captain, reports that the club's caterers, Liz and her team, were highly praised; also the green-keeping staff for how well the course was playing.

Inter County Club Competitions: The Gents Palairat and Devon League competitions continue. The Palairat team did very well, and were only one match away from the semi-finals. It wasn't to be and the team were beaten by a very good Honiton Golf Club, and Bigbury's Palairat journey has ended. The Devon League team matches continue and they have had some mixed results. There are some 5 matches still to be played.

Our Ladies Presidents and Sheelah Creasy Bowl Teams have now completed their matches for the 2018 season. Both Teams had a very tough draw, with matches at Axe Cliff, Royal North Devon, Ilfracombe and, thankfully, our close neighbours Thurlestone. Because of the draw, our teams have travelled just under 550 miles for their away matches. Both teams have had some very close results but will not now continue in these Inter County Competitions. Thanks are recorded to their Captains, Linda Hanbury (Presidents) and Anne Fowler (Creasy). Also thanks to Jane Rickman who Captained one of the Presidents Matches in Linda's absence.

Our Devon Ladies' League Golf team has one more match to play, at Dainton in August. However, we will need an incredible win to proceed to the semi-finals. We wish Jane Rickman, our Captain, and her team all good luck in this match.

Bigbury Juniors: Our Juniors played their July Stableford and it was a small entry. They enjoyed their competition, played in wall to wall sunshine. It was a long round for them, playing behind the 4BBB Mixed Open. The Juniors Winner was their Team Captain, Jessica Leach. In second place was Graham Smith, third was Adam Taylor and fourth was Graham Inch. Jess was a convincing winner with a very good 39 points.

General: The Bigbury Golf members are enjoying playing the inter County matches, club competitions and social golf in the wonderful spell of glorious weather. The course is playing well, leading to the gents and ladies having tumbling handicaps. Two of our Ladies have had dramatic handicap reductions, in one



week Ros Hanley was cut from 28 to 23 and since April Sarah West has been cut from 30 to 24. Very well done Ros and Sarah, as well as many more members who have reduced their handicaps.

Last but not least: On Saturday 30th June **Marlene Johnson** celebrated her Lady Captain's Day, one of the highlights of the year for all Captains. Because of her fondness of travel, Marlene's theme for the day was "Happy Holidays". Much fun and laughter was had throughout the day, with the Bigbury Ladies Chorus welcoming Marlene into the clubhouse with its own rendering of "We're all going on a Summer Holiday". All the ladies joined in with the "apres golf" happy holiday outfit and the Clubhouse and restaurant were a mass of colour.

Fifty Ladies enjoyed a meal which followed the "Happy Holiday" theme. Our in-house caterer Liz (and her team) served up an amazing Mesmerising Meze, followed of course by ice cream. The winner of the prestigious Lady Captain Trophy was **Ros Hanley**, and many other prizes were won.

Photograph:(below) All the Bigbury Lady Captain's Day Prize winners. Fourth from the left is **Marlene Johnson**, and to her right **Ros Hanley** with the Trophy.

## BIGBURY ALBUM



Hazel Osborne sent in this photo with the title: Holiday visitor spots permanent resident!

## COMMON GROUND

### WRITE IN

If you have topics for COMMON GROUND - please write in. Meditators, acrobats, artists, magicians, dancers, jugglers, ramblers, nudists, head standers, bicyclists, swimmers, surfers, climbers, paddlers, fishermen, gardeners...surely you have something in common with someone?

## Visit the Nkuku Lifestyle Store and Café

At Nkuku we create beautiful homewares, accessories and gifts. We work with artisans throughout the world, combining timeless design with traditional skills and natural materials.

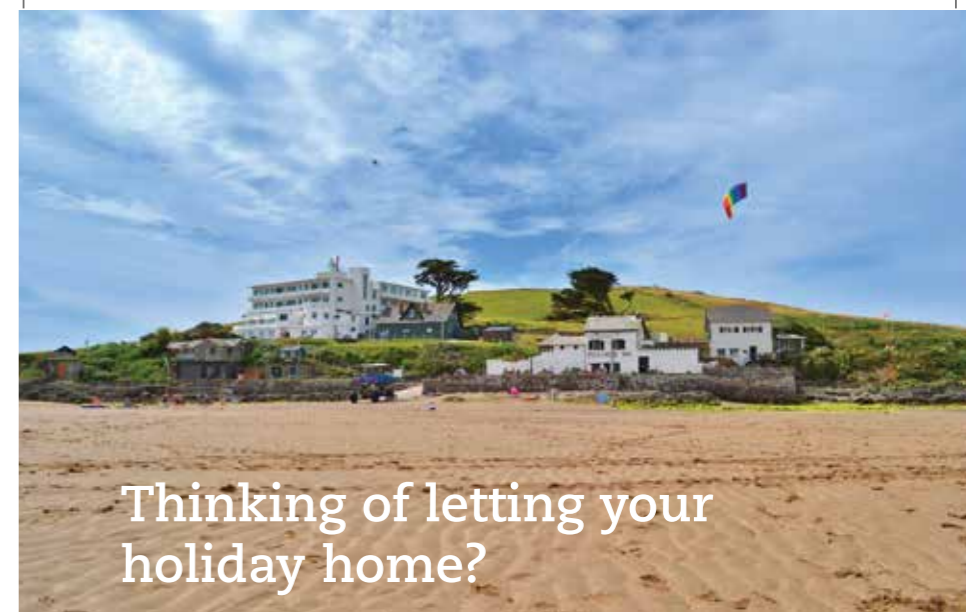
The Nkuku café serves the finest artisan, wood roasted coffee; served by an experienced barista each blend has been personally curated ensuring a delicious flavour. The café serves brunch, cakes and light lunches.

The pretty courtyard features a covered seating area; the perfect spot to while away an afternoon.

Free parking and Wi-Fi available.

VISIT US  
Nkuku Lifestyle Store and Café  
Brockhill Barns  
Harbertonford  
Totnes  
Devon TQ9 7PS  
Tel: +44 (0)1803 463365

OPENING HOURS  
Monday - Saturday | 9am - 6pm  
Sunday and Bank Holidays |  
10.30am - 4.30pm  
www.nkuku.com



## Thinking of letting your holiday home?



### Speak to your local holiday letting specialist

Looking for more from your holiday cottage agency? Then speak to award-winning Toad Hall Cottages. Our experienced team of property managers have the knowledge to ensure that your investment fulfils its potential throughout the year. Call us now for free and honest advice.



Call us on: 01548 202020 | [www.toadhallcottages.co.uk](http://www.toadhallcottages.co.uk)



# nkuku

HOME AND LIFESTYLE





# BIGBURY EVENTS

## BIGBURY CHURCH SUMMER FETE!



WEDNESDAY 8TH AUGUST  
12 - 5pm

MEMORIAL HALL  
ST. ANN'S CHAPEL

ADMISSION £1  
Children Free

Stalls, Games, Raffle, Tombola,  
Light Lunches, Cream Teas.

**DO YOU....**

**SUPPORT  
OUR LOCAL SHOPS  
and  
EVENT ORGANISERS?**

# HOLYWELL STORES



**Premier** Your one-stop shop  
Amazing Value Locally

### AUGUST OPENING HOURS

7am to 8pm MONDAY to SATURDAY  
8am to 5pm SUNDAYS & BANK HOLIDAYS  
\*\*\*\*\*

FRESH BURGERS & KEBABS FROM  
POLLARDS  
HOT PASTIES & CROISSANTS  
FRESH SANDWICHES  
\*\*\*\*\*

SUSTAINABLE LOCAL CHARCOAL £6 -  
DISPOSABLE BBQ'S FIRELIGHTERS - LOGS -  
CALOR GAS

CHILLED WINES & BEERS READY TO GO

**Holywell Stores & Post Office, St. Ann's Chapel, Bigbury**



Shop Open  
Monday - Saturday 7am - 6pm  
Sunday 8am - 5pm  
Post Office Open: Mon-Fri 9-1pm

Free Car Parking behind the shop  
Tel: 01548 810308  
Email: holywellstores@msn.com  
www.2day.ws/holywellstores

## FABULOUS HAND SPUN MILKSHAKES

BEAUTIFUL LOCAL FOOD  
Open 9:30am - 5:00pm everyday

Est. 1965

# VENUS

*loving the beach*

www.lovingthebeach.co.uk  
The Warren, Bigbury On Sea, TQ7 4AZ



**OREO  
MILKSHAKE**



**VANILLA  
MILKSHAKE**



**STRAWBERRY  
MILKSHAKE**



**CHOCOLATE  
MILKSHAKE**